



Wind Turbine and Radio System Analysis

Addressing Siting Challenges

As alternative energy development continues to grow, and wind energy projects are installed all over the world, ATDI possesses the right tools and expertise for resolving potential siting challenges with wind energy implementations.

ATDI has a proven track record for identifying and mitigating potential interference issues between wind turbines and any radio frequency based communications technology. Whether your need is to mitigate potential false target returns for radar surveillance systems, or interference to microwave beam paths, broadcast systems, maritime or mobile trunking systems, ATDI has the experience to properly mitigate potential conflicts.

Standard Services Include:

To ensure wind generators will not interfere with existing communication systems it is important to address these siting issues earlier on in the proposed wind turbine project stages. The following services are offered by ATDI:

- Licensed Microwave Beam Path Analysis
- Wireless Telecommunication Systems Analysis
- TV Analysis
- Radar Line of Sight Analysis



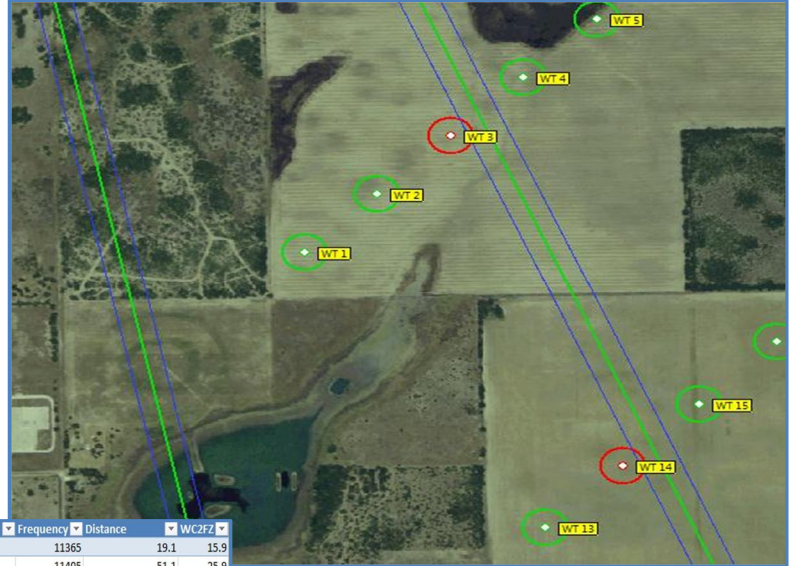
Wind Energy Services



Wind Energy Services

Zoomed View:

Turbine and Beam Path Intersection



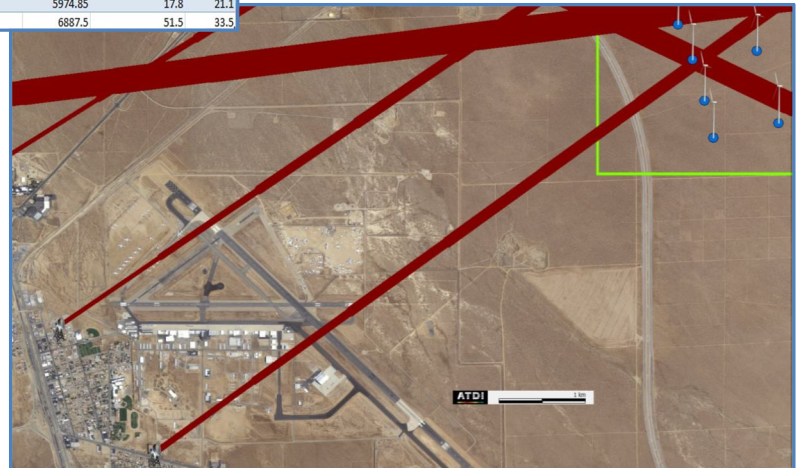
callsin	SiteA	SiteB	Licensee	Frequency	Distance	WC2FZ
KOR41	SPRINGFIELD	BELT RD	WASHINGTON GAS LIGHT COMPANY	11365	19.1	15.9
KZK53	BELT RD	BULL RUN MT	WASHINGTON GAS LIGHT COMPANY	11405	51.1	25.9
KZK53	BELT RD	SPRINGFIELD	WASHINGTON GAS LIGHT COMPANY	11405	19.1	15.8
KZK54	BULL RUN MT	BELT RD	WASHINGTON GAS LIGHT COMPANY	11405	51.1	25.9
WAH502	MIDDLEBURG	ROCKVILLE	CELLCO PARTNERSHIP	6197.2	49.2	34.5
WBA729	ROCKVILLE	MIDDLEBURG	CELLCO PARTNERSHIP	5974.8	49.2	35.1
WLE362	STUDIO	WNVC-TV	RADIO LICENSE HOLDING VII LLC	944.5	15.1	48.9
WLE657			GREATER WASHINGTON EDUCATIONAL TELECOMMUNICATIONS ASSN.	944.15	95.3	123
WMV799			DETROIT FREE PRESS INC.	13112.5	15.7	13.4
WNTP787 STATION		1596 Greater Washington Educational Telecommunications Association Inc.		957.95	95.3	122.1
WPND934		955 GEORGE WASHINGTON UNIVERSITY		6755	24.9	23.5
WPNM56; NEW SUITLAND	GAITHERSBURG		WASHINGTON SUBURBAN SANITARY COMMISSION	6745	36.1	28.3
WPOU507			NBC TELEMUNDO LICENSE CO.	12925	14.3	12.9
WPQT499 FAIRFAX	WTTG		FOX TELEVISION STATIONS INC.	6875	27.1	24.3
WPSG351 WUSA1	Tyson's Headquarters		Gannett Co. Inc.	6595	12.4	16.8
WPSG352 Tyson's Headquarters	WUSA1		Gannett Co. Inc.	11285	12.2	12.7
WPTT669 Tycor Path A TX	Tycor Path A RX		DETROIT FREE PRESS INC.	12712.5	12.2	12
WPTX641 Tycor Path B TX	Tycor Path B RX		DETROIT FREE PRESS INC.	13087.5	12.2	11.8
WPTX642 Tycor Path C TX	Tycor Path C RX		DETROIT FREE PRESS INC.	12912.5	12.2	11.9
WPUV788 WRC	LRT		Winstar Wireless Fiber Corp. (Chapter 7 Debtor)	6286.19	17.8	20.6
WPUV789 LRT	WRC		Winstar Wireless Fiber Corp. (Chapter 7 Debtor)	6034.15	17.8	21
WPV5788 WRC TV	LITTLE RIVER		New Cingular Wireless PCS LLC	6226.89	17.8	20.7
WPV5789 LITTLE RIVER	WRC TV		New Cingular Wireless PCS LLC	5974.85	17.8	21.1
WPXG460 Bull Run	WUSA Tower		DETROIT FREE PRESS INC.	6887.5	51.5	33.5

FCC Licensed Search:

Intersecting frequency, licensee name, and site location details

Beam Path Obstruction Analysis:

Distance between tip of turbine blade & Fresnel zone with 3D Clearance



CONTACT

ATDI Inc. +1 703 848 4750

Contact ATDI Inc. to find out more information and to request a quote

www.atdi.us.com



Wind Energy Services

How ATDI can get started:

- To begin the radio interference evaluation process, just provide us with a projected location of interest and the actual location of the turbines, if available.
- Identify the analysis report which meets your needs and within 24-48 hours we will quickly identify any potential issues to RF systems in the area of interest.
- Our reports can be used in conjunction with your environmental impact assessment.

The ATDI advantage:

- ATDI is the leader in turn-key Spectrum Management solutions.
- ATDI's software tools and experienced RF Engineers focus on the issues at hand by identifying, evaluating, and mitigating potential impacts on RF systems.
- ATDI collects and maintains an active technical database.
- ATDI actively participates in Government held briefings regarding siting challenges.

Speak with the

Radiocommunication Experts

If you are interested in our services and would like to learn more about how to use our software tools to calculate the effects of wind farms on radar and other radio systems, please contact us.

ATDI Inc.

1420 Beverly Road, Suite 140
McLean, VA 22101
+703 848 4750

You can also find out more by visiting our website.

www.atdi.us.com

We look forward to hearing from you.

ATDI Inc. is firmly established as one of the leading international radiocommunications solutions providers since 1991. ATDI focuses on the development, marketing and sales of its product line of commercial off-the-shelf and modified off-the-shelf radio frequency engineering tools and related services. Currently comprised of 9 worldwide offices, one of our key strengths is in our people and their hands-on knowledge and experience of all aspects of radio frequency planning.