

The background of the slide is a faded, aerial-style map. It shows a grid of streets and various colored areas representing different regions or data points. The map is semi-transparent, allowing the text to be clearly visible over it.

■ Map Maker

October 2008



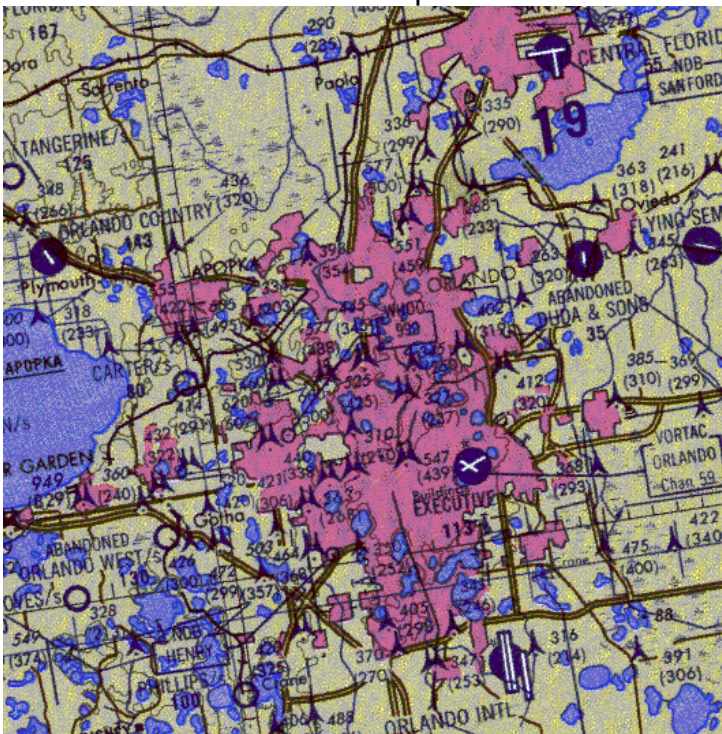
Introduction

This document introduces the latest in medium resolution imagery creation using ATDI's Map Maker tool. This new feature allows for the easy creation of copyright free imagery with the unique feature to display different levels of information based on the zoom level of the viewer. Medium resolution is considered data between 10 and 100 meters.

Why make Map Maker: Vector and Raster maps

ATDI tools work with raster grids and vector overlays. Raster images, like maps and photos can be easily found and purchased. The satellite imagery, while pretty, gives no real defining markings for a user to spatially reference where they are. For scanned maps the opposite is true. Sometimes there can be too much information in one area or the writing too small to read. Raster images are ideal at full scale, but do not render well when zoomed in or out. Vector maps scale well but do not contain as much information.

TPC Map

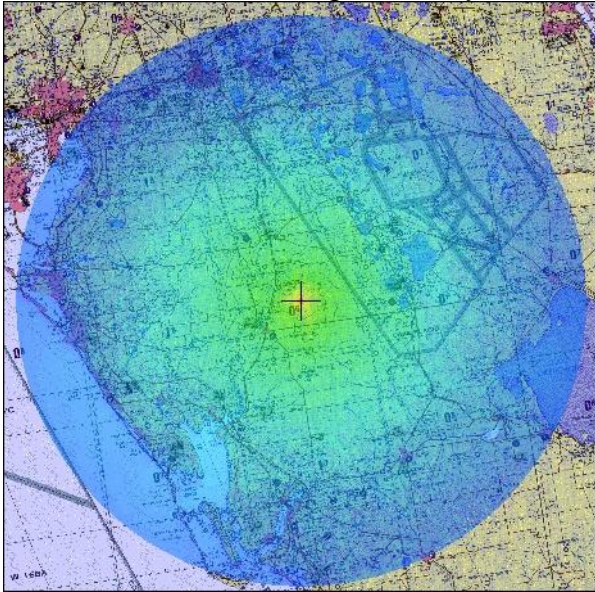


Satellite Image

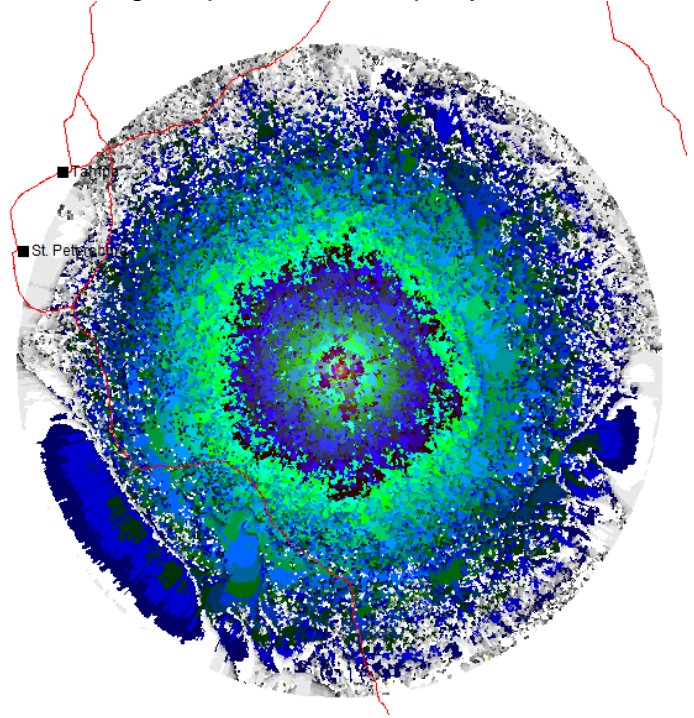




Raster Coverage Overlay



Coverage exported to third party vector GIS



ATDI's solution for RF professionals is to combine the advantages of vectors and raster grids to produce a map that adapts its view, included at no extra cost inside ICS Map Server. This will allow for ICS telecom/HTZ warfare users to create easy to understand, clean looking reports without having to export ICS telecom/HTZ warfare's prediction results to other tools for reporting purposes.

A cleaner more readable map: About Map Maker

The Map Maker is a module inside ICS Map Server that uses raster and vector data to create copyright free images that display different levels of information based on how much a user is zoomed in to the map interface. The different types of information that change between zoom levels include borders (Country, State, County, etc), major roads, and city names. By displaying different levels of information at varying zoom levels a user can have several different scales of reference at their disposal and still retain a readable image. Below are screen shot examples of "County Level" and "Local Level" zooms for an area in Florida.



Blue lines represent county borders, orange lines are roads, light yellow are urban areas

Using the Map Maker

To create a map with the Map Maker, a terrain file and land cover file (*.GEO and *.SOL) are needed. These files are assumed to be in the same directory as well as have the same name, for example: AOI.GEO, AOI.SOL

- 1) Inside ICS Map Server use the Import/Export Menu -> Map Maker option to access the Map Maker.
- 2) Select either US Medium Resolution or Worldwide VMAP from the list in the upper left corner of the Map Maker box.
- 3) Use the change buttons to select the terrain files to make maps from as well as the directory to put the finished product(s).
- 4) Click on the Make Map Button.
- 5) Choose Confirm.



Results

When the Map Maker process is completed two files are created, a *.rim file and a *.pal file. The RIM file is the result of images from different zoom levels combined into one file. The PAL file contains the color information for the RIM file. The rim and pal files can be loaded in place of any existing IMG/PAL files associated with a project.

To see the effects of the new image, use either the scroll wheel on the mouse or the magnifying glass tool to zoom in and out of the map.

