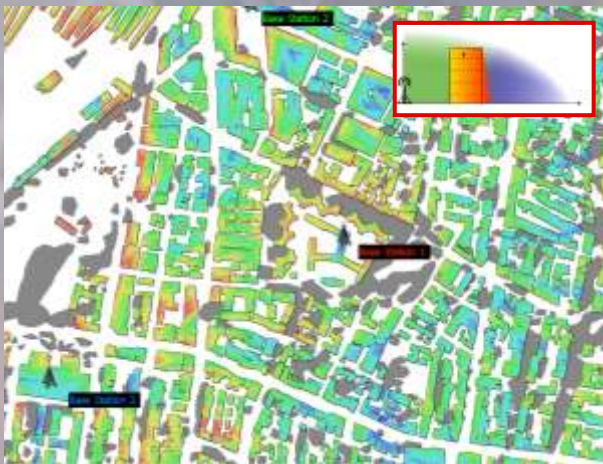
**Fixed**

- White Paper  
March 2006

A quick-guide to 802.16e  
radio-planning  
with ICS telecom

Emmanuel Grenier

**Nomadic****Mobile**



## Abstract

This white paper provides a radio-planning workflow for WiMax technologies with ICS telecom.



It focuses not only on **fixed and nomadic WiMax** that have heavily being tested and deployed all over the world, but also provides dedicated planning methodologies for **mobile WiMAX**. Since the early ratification of the 802.16e standard by IEEE, WiMAX becomes eventually mobile, enabling roaming between cells.

The provided workflow is divided in three parts :

- The **coverage model** allows the user to dimension its WiMax network.
- The **capacity model** will ensure that the WiMAX BS won't be overloaded due to the traffic requests of the CPEs or Mobile Units.
- The **spectrum model** will minimize the interference areas, and update the achievable traffic in the WiMAX network designed.

---

## References

- WiMAX Forum: Mobile WiMAX -- Part I: A Technical Overview and Performance Evaluation
- ATDI (Daniel Humire-EG) : A brief overview of 802.16e specific features and current developments for simulating a WiMAX Network with ICS telecom
- WiMAX forum : WiMAX application usage profile (AWG Application Traffic Model and Usage Profile - Sub team)
- Intel© Corporation : RF systems and circuit challenges for WiMAX
- J.H. Stott : How and why OFDM



## Table of Content

|          |   |           |
|----------|---|-----------|
| <b>1</b> | <b>Required components</b>                                    | <b>1</b>  |
| 1.1      | <b>Cartography</b>  | <b>2</b>  |
| 1.2      | <b>Network components</b>                                     | <b>3</b>  |
| <b>2</b> | <b>Project setup</b>  | <b>4</b>  |
| <b>3</b> | <b>The Base Stations network</b>                              | <b>5</b>  |
| 3.1      | <b>Import</b>   | <b>5</b>  |
| 3.2      | <b>Optimize the base station locations</b>                    | <b>6</b>  |
| <b>4</b> | <b>The WiMAX coverage</b>                                     | <b>9</b>  |
| 4.1      | <b>802.16 Propagation</b>                                     | <b>9</b>  |
| 4.2      | <b>Coverage calculation</b>                                   | <b>10</b> |
| 4.3      | <b>Filtering the best BS locations</b>                        | <b>11</b> |
| 4.4      | <b>Sectorizing the Base Stations and analyze the coverage</b> | <b>12</b> |
| <b>5</b> | <b>WiMAX Capacity analysis</b>                                | <b>13</b> |
| 5.1      | <b>Bit rate / modulation map</b>                              | <b>13</b> |
| 5.2      | <b>The WiMAX CPE</b>  | <b>14</b> |
| 5.2.1    | Radiation pattern   | 15        |
| 5.2.2    | The 802.16 parenting according to the Service Flows           | 15        |
| 5.2.3    | QoS curve according to the contention ratio                   | 21        |
| <b>6</b> | <b>WiMAX Spectrum analysis</b>                                | <b>22</b> |
| 6.1      | <b>FWA-type analysis</b>                                      | <b>22</b> |
| 6.1.1    | Coverage mode   | 22        |
| 6.1.2    | PMP interference  | 26        |
| <b>7</b> | <b>Mobility analysis</b>                                      | <b>27</b> |
| 7.1      | <b>Delay spread</b>   | <b>27</b> |
| 7.2      | <b>Hand-over maps</b>   | <b>28</b> |
| 7.2.1    | Fast Base Station Switching                                   | 28        |
| 7.2.2    | Hard handover   | 30        |
| 7.3      | <b>Hand-over along a mobile path</b>                          | <b>30</b> |
| <b>8</b> | <b>WiMAX radio-planning : a workflow with ICS telecom</b>     | <b>31</b> |



# A QUICK-GUIDE TO 802.16E RADIO-PLANNING WITH ICS TELECOM

Note : all provided values are FOR INFORMATION ONLY

## 1 Required components

In order to perform an accurate WiMAX radio-planning of fixed, nomadic type or mobile type, ICS telecom requires several inputs such as **digital cartography**, **technical parameters of the equipment(s)** you want to simulate, having a good knowledge of the minimum **Quality of Service** you want to ensure, as well as being aware of the **spectrum** available.

| Spectrum  | Duplexing mode | Channel bandwidth (MHz) | FFT size             | IEEE Standard |
|-----------|----------------|-------------------------|----------------------|---------------|
| 3400-3600 | TDD            | 3.5                     | 256                  | 806.16-2004   |
| 3400-3600 | FDD            | 3.5                     | 256                  | 806.16-2004   |
| 3400-3600 | TDD            | 7                       | 256                  | 806.16-2004   |
| 3400-3600 | FDD            | 7                       | 256                  | 806.16-2004   |
| 5725-5850 | TDD            | 10                      | 256                  | 806.16-2004   |
| 2495-2690 | TDD            | 1.25, 5, 10, 20         | 128, 512, 1024, 2048 | 802.16e       |
| 2495-2690 | TDD            | 4.375                   | 512                  | 802.16e       |
| 2495-2690 | TDD            | 8.75, 15                | 1024                 | 802.16e       |
| 2300-2400 | TDD            | 1.25, 5, 10, 20         | 128, 512, 1024, 2048 | 802.16e       |
| 3300-3600 | TDD            | 3.5                     | 512                  | 802.16e       |
| 3300-3600 | FDD            | 3.5                     | 512                  | 802.16e       |
| 3300-3600 | HFDD           | 3.5                     | 512                  | 802.16e       |
| 3300-3800 | TDD            | 4.375                   | 512                  | 802.16e       |
| 3300-3900 | TDD            | 1.25, 5, 10, 20         | 128, 512, 1024, 2048 | 802.16e       |
| 3300-3900 | TDD            | 7, 10                   | 512, 1024            | 802.16e       |
| 3300-3900 | FDD            | 7, 10                   | 512, 1024            | 802.16e       |
| 3300-3900 | HFDD           | 7, 10                   | 512, 1024            | 802.16e       |

Different 802.16 profiles

| Definition      | Devices   | Locations | Speed                | Handoffs      | 802.16-2004 | 802.16e<br>802.16-2005 |
|-----------------|---|-----------|----------------------|---------------|-------------|------------------------|
| Fixed access    | Outdoor CPEs<br>Indoor CPEs                           | Single    | Stationary           | No            | Yes         | Yes                    |
| Nomadic access  | Indoor CPEs<br>PCMCIA cards                           | Multiple  | Stationary           | No            | Yes         | Yes                    |
| Portability     | Laptop PCMCIA<br>mini cards                           | Multiple  | Walking speed        | Hard handoffs | No          | Yes                    |
| Simple mobility | Laptop PCMCIA<br>mini cards<br>PDAs or<br>smartphones | Multiple  | Low vehicular speed  | Hard handoffs | No          | Yes                    |
| Full mobility   | Laptop PCMCIA<br>mini cards<br>PDAs or<br>smartphones | Multiple  | High vehicular speed | Soft handoffs | No          | Yes                    |

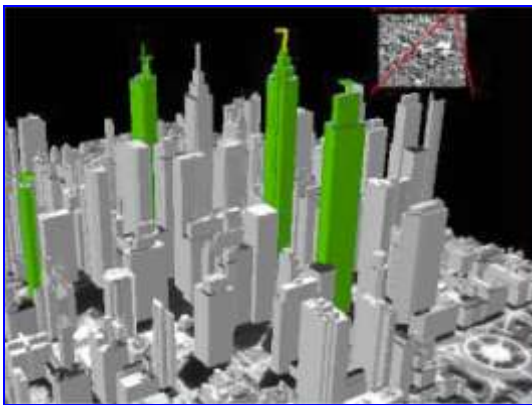
Different types of WiMAX



## 1.1 Cartography

The choice of the cartography to use depends on the type of WiMAX radio-planning to perform :

- Large scale WiMAX networks would require Medium Resolution cartography
- Close range WiMAX network analysis would require High resolution cartography.



HR cartography



MR cartography

|                        | Low resolution data  | Medium resolution data   | High resolution data   |
|------------------------|--|--|--|
| <b>Typical content</b> | DTM at 500m  | <ul style="list-style-type: none"> <li>. DTM at 30m</li> <li>. Clutter file giving different urban and vegetation heights as aggregates</li> <li>. Topographic map</li> </ul>  | <ul style="list-style-type: none"> <li>. DTM at 2m</li> <li>. Building height file at 2m</li> <li>. Type of building map at 2m</li> <li>. True-orthophoto</li> </ul> |
| <b>Typical use</b>     | Not advised because of the lack of accuracy of the cartography | <ul style="list-style-type: none"> <li>Network dimensioning</li> <li>Capacity and QoS analysis of an entire network</li> <li>Interchannel interference between the Base Stations</li> <li>Handover map of the network</li> </ul> | <ul style="list-style-type: none"> <li>High-end OFDM coverage of a few base stations</li> <li>Detailed throughput and interference analysis on a hot-spot</li> </ul> |

Different cartographic datasets for different planning methodologies



## 1.2 Network components

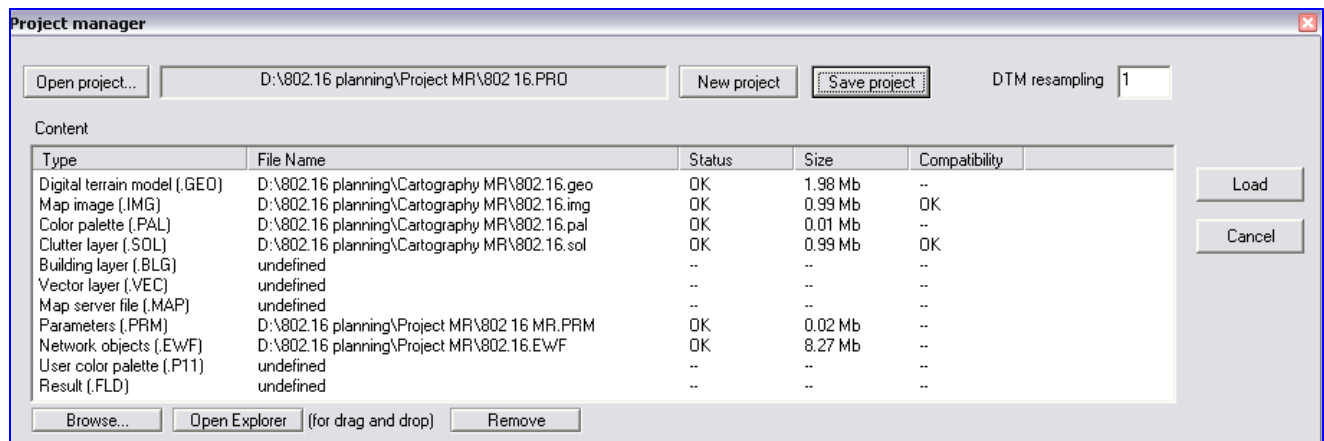
|                       |                      | Base Station   | CPE   | Goal  |
|-----------------------|----------------------|--|---|---|
| Connectivity Coverage | Common               | Radiation pattern<br>Antenna height  | Radiation pattern<br>Antenna height   | Define the coverage model   |
|                       | Downlink             | Radiated power   | Rx Gain<br>Sensitivity<br>Max tolerated latency   |   |
|                       | Uplink               | Rx Gain<br>Sensitivity   | Radiated power  |   |
| Capacity              | FDD                  | Downlink Throughput<br>Uplink Throughput                                   | UL and DL Traffic request<br>Service flow repartition<br>Activity factor<br>Modulation table  | Define the traffic capacity model   |
|                       | TDD                  | Throughput<br>UL/DL duration ratio   |   |   |
| Interference          | Coverage mode<br>ISI | Max tolerated deltaToA between the direct and the reflected paths          | Radiation pattern<br>Protection ratios<br>Noise Floor<br>Max threshold degradation tolerated<br>Rejection mask<br>Radiation pattern | Define the spectrum model   |
|                       | Coverage mode<br>ICI | Radiation pattern<br>Protection ratios                                     |   |   |
|                       | PMP mode             | Max threshold degradation tolerated<br>Rejection mask<br>Radiation pattern |   |   |
| Mobility              |                      | Active set allocation<br>FSBB handover value<br>HHO handover value         |   | Define the active sets of the network for an optimal management of the handoffs |



## 2 Project setup

WiMAX radio-planning in ICS telecom works on a project base. The project specifies :

- The area of interest;
- The cartographic layers to use for calculation and display purposes;
- The base stations location and their corresponding technical parameters and coverage;
- The CPE locations and their corresponding technical parameters (Fixed/Nomadic WiMAX);
- The calculation (propagation model, coverage threshold...) and display properties.



The project manager window in ICS telecom

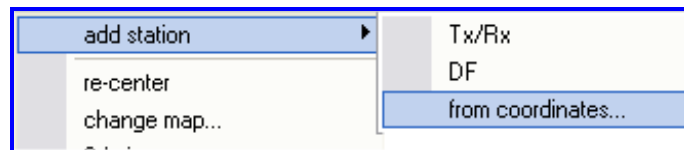


### 3 The Base Stations network

#### 3.1 Import

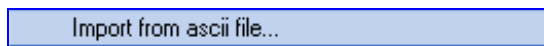
There are number of ways to add a base station on the map :

- Manually
- Using coordinates



Adding a site using its coordinates

- Import from an Excel spreadsheet

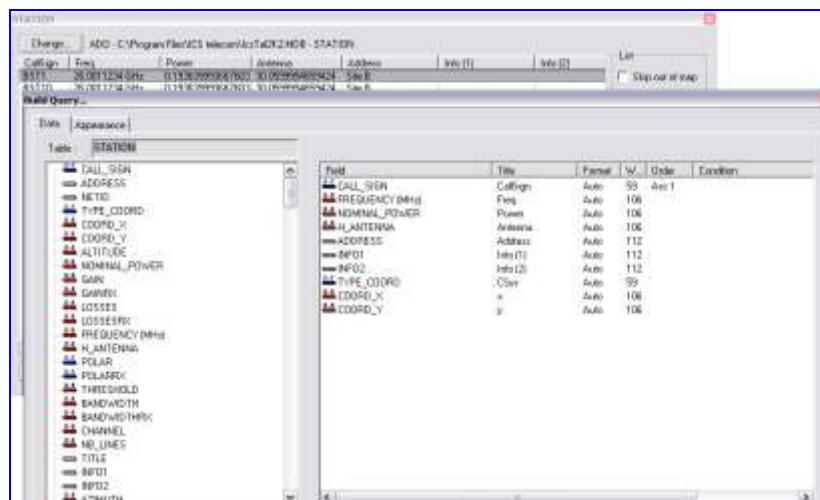


Ascii file

| Col 1    | Col 2    | Col 3          | Col 4    | Col 5     | Col 6       | Col 7       | Col 8       | Col 9        |       |
|----------|----------|----------------|----------|-----------|-------------|-------------|-------------|--------------|-------|
| Callsign | Info(1)  | X or long      | Y or lat | Coordcode | Antenna (m) | Azimuth (°) | Tilt (°)    | Tx frequency |       |
| Record   | Col 1    | Col 2          | Col 3    | Col 4     | Col 5       | Col 6       | Col 7       | Col 8        | Col 9 |
| 1        | Callsign | Info(1)        | Xo       | Yo        | CodeOut     | Antenna (m) | Azimuth (°) |              |       |
| 2        | BS2 Sec1 | Base station 2 | -0.27419 | 46.19296  | 4DMS        | 25          | 0           |              |       |
| 3        | BS2 Sec2 | Base station 2 | -0.27419 | 46.19296  | 4DMS        | 25          | 90          |              |       |
| 4        | BS2 Sec3 | Base station 2 | -0.27419 | 46.19296  | 4DMS        | 25          | 180         |              |       |
| 5        | BS2 Sec4 | Base station 2 | -0.27419 | 46.19296  | 4DMS        | 25          | 270         |              |       |

Import of a site list from a spreadsheet

- Connection to an ODBC/ADO compliant exchange table (Access®, Oracle®, Foxpro®...)



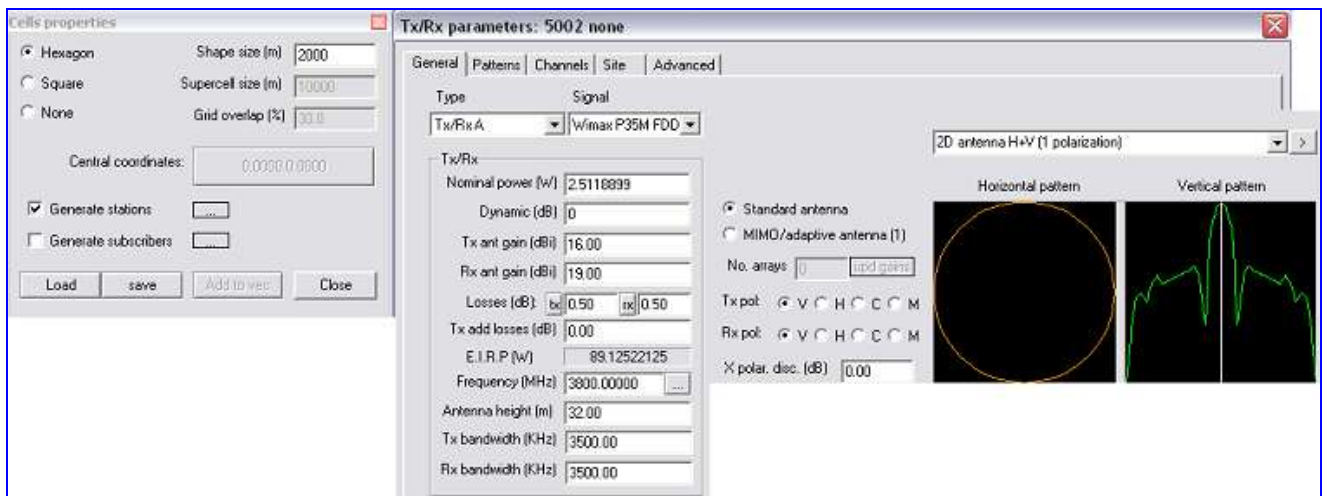
Integration of ICS telecom into an ODBC/DAO compliant database management software



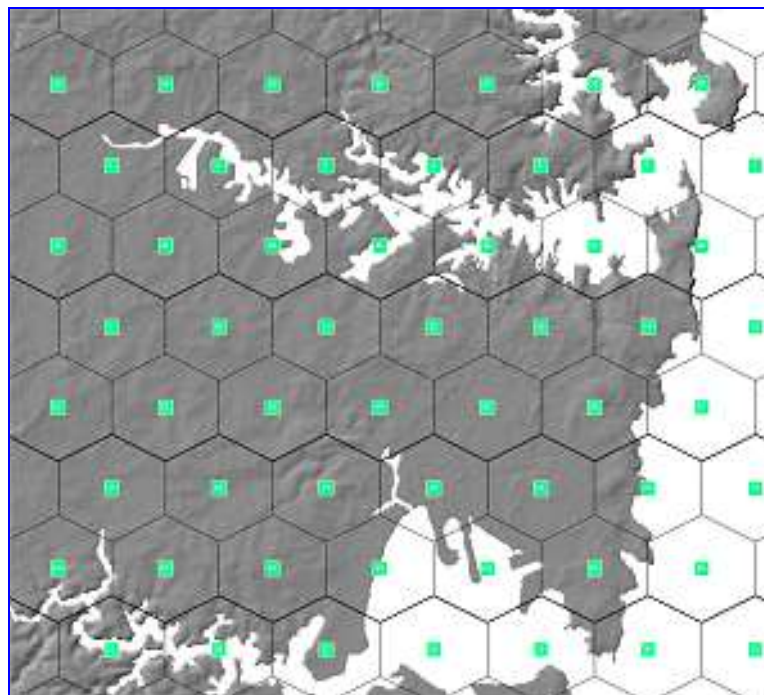
### 3.2 Optimize the base station locations

ICS telecom features different ways to find the best locations for a WiMAX BS (Identification of the highest point in a given area, site searching from the prospected CPE locations..).

One way to proceed would be to display on top of the Area of Interest a pattern of hexagonal shapes, and to place an omni-directional BS in the center of each cell.



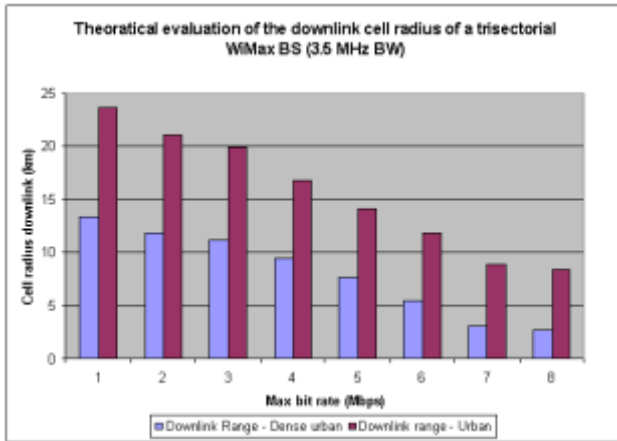
WiMAX Macrocell technical parameters



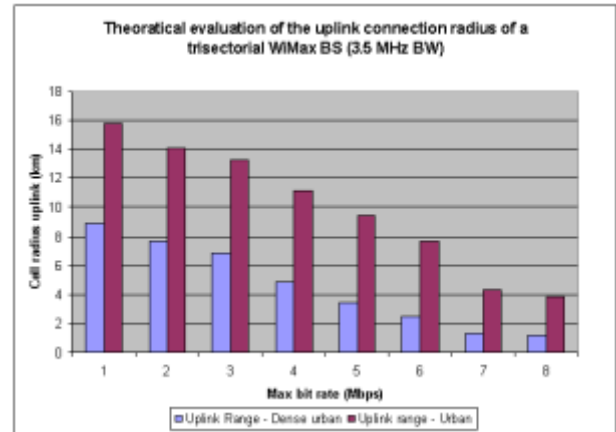
Raw distribution of the WiMAX macrocells in ICS telecom



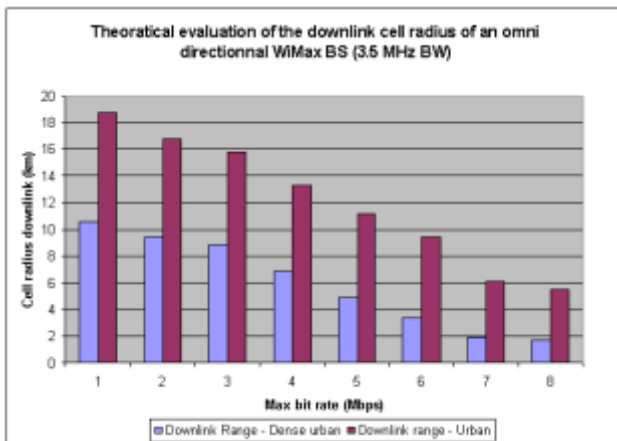
The **size of the cell** should be smaller than the expected coverage range.



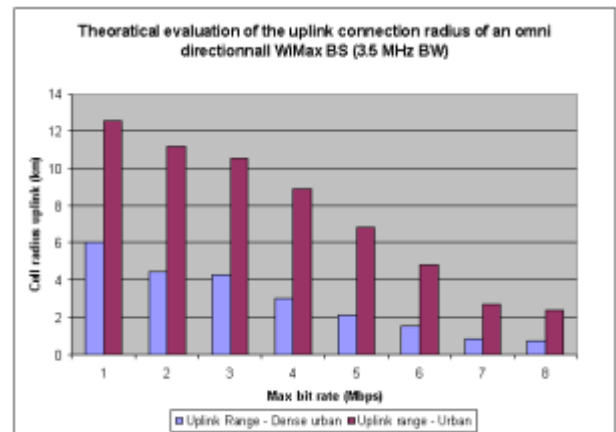
Downlink – 3 sectors



Uplink – 3 sectors



Downlink - Omni

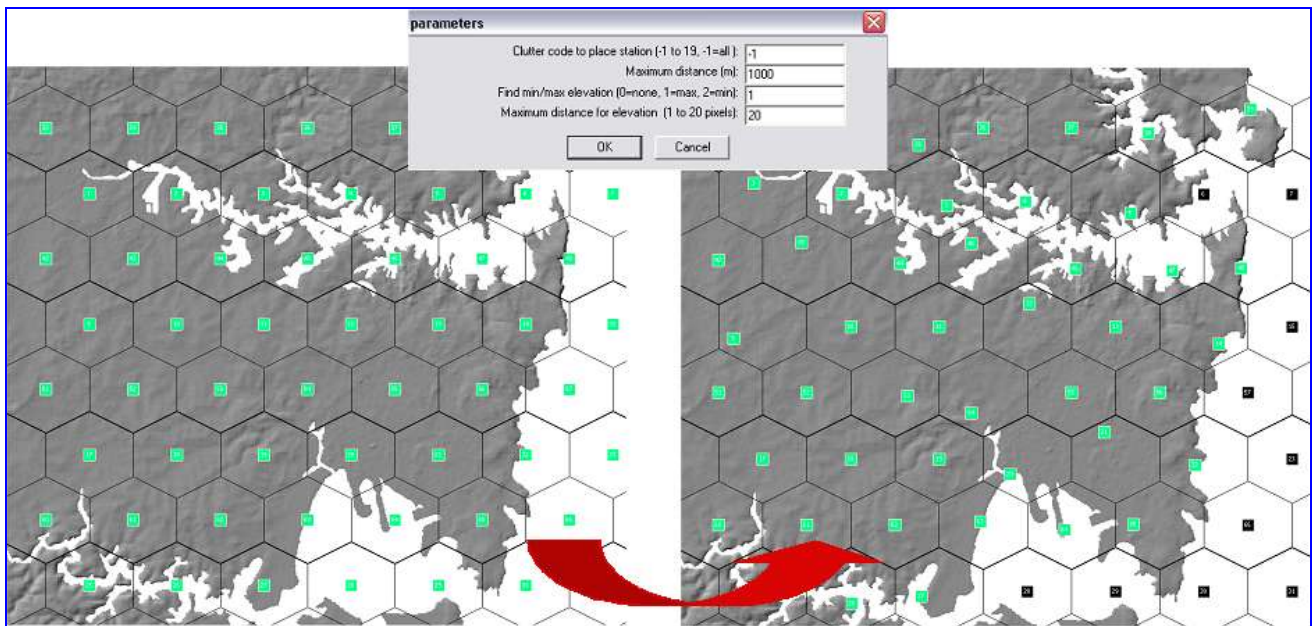


Uplink - Omni

As a worst case scenario, defining a cell pattern of 2 km in a urban area guarantees on a good theoretical coverage, including the relevant fade margin.



The next stage is to replace the Base Stations on the **highest points** within the cell, and to remove the inadequate BS (in black here below).



Filtering the relevant WiMAX macrocells

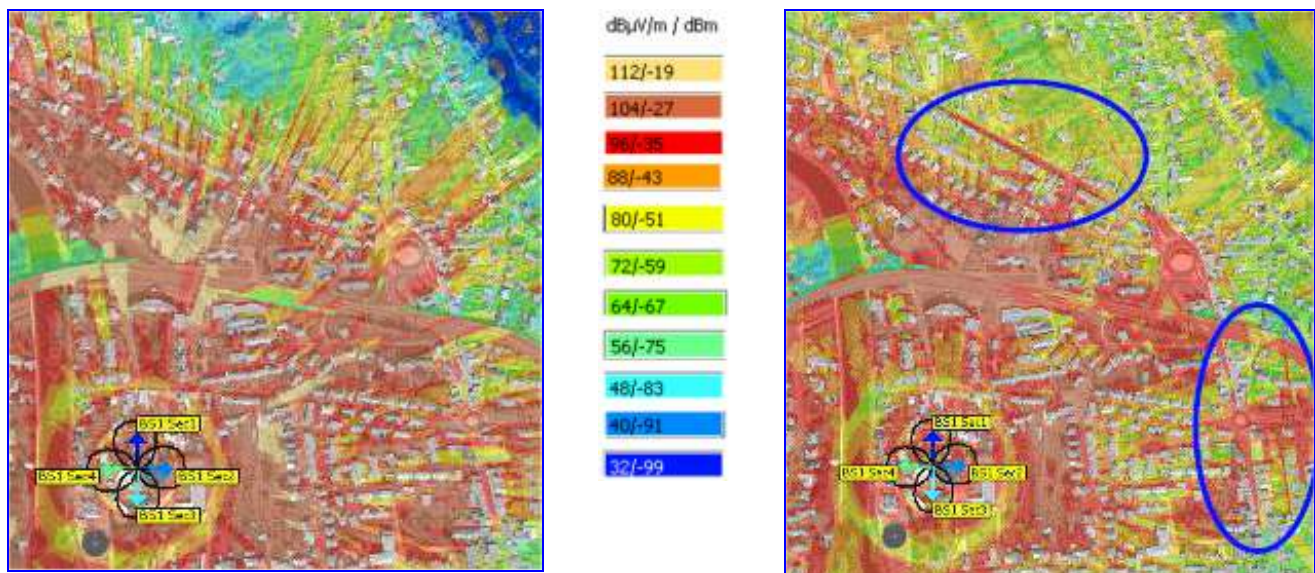
The next step is to calculate the corresponding coverage in order to decrease the density of the BS distribution while the coverage goal is still achieved.



## 4 The WiMAX coverage

### 4.1 802.16 Propagation

A previously published white paper entitled "3D Propagation Modeling in an Urban Environment" (June 2005) described the changes implemented in ICS telecom over two years ago in anticipation of demands to simulate propagation specific to Fixed Wireless Access technologies. These developments include the ability to simulate **outdoor to indoor propagation** (via absorption), the **InterSymbol Interference effects** of multipath reflection specific to OFDM equipment (ray-tracing) and the "urban canyoning" effect, LOS, NLOS and nLOS characteristics of a radio profile analysis, power delay spread and so forth.



Deterministic simulation of the canyon effect in an urban setting without using ICS telecom's ray-tracing engine. Each building along the direct path becomes a physical obstacle to the signal propagation. Cannot visualize the effects of reflection.

Deterministic simulation of the canyon effect in an urban setting with ICS telecom's ray tracing engine. Each building along the possible paths (direct or not) become physical obstacles to the signal propagation. Some constructive field strength effects due to multipath reflection are highlighted with blue circles.

In addition to the features specific to deterministic planning in high resolution cartographic environments, several statistical algorithms (**COST231**, Okamura-Hata, ITM 122, ITU-R P.1225) have been integrated for propagation analysis over medium resolution environments (30m-90m), if the appropriate model tuning can be done. Given the prominence of the **SUI Channel implementation of the Erceg model** in the WiMAX Forum, an open configuration of this algorithm is integrated for use with ICS telecom. However, the use of these models for accurate propagation analysis for FWA/Mobile applications is still far from evident without a proper model tuning.



## 4.2 Coverage calculation

The coverage of the network can for instance be calculated according to :

The sensitivity of the receiver in downlink.

The height of the receiver above ground level.

The maximum connection range in uplink.

**Coverage parameters**

Height of Rx antennas (m)

Distance (km)

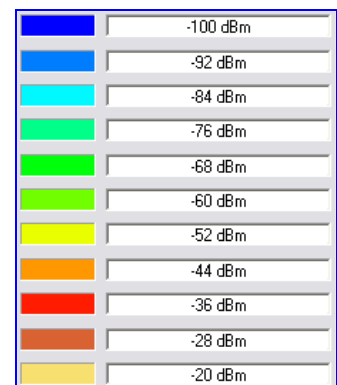
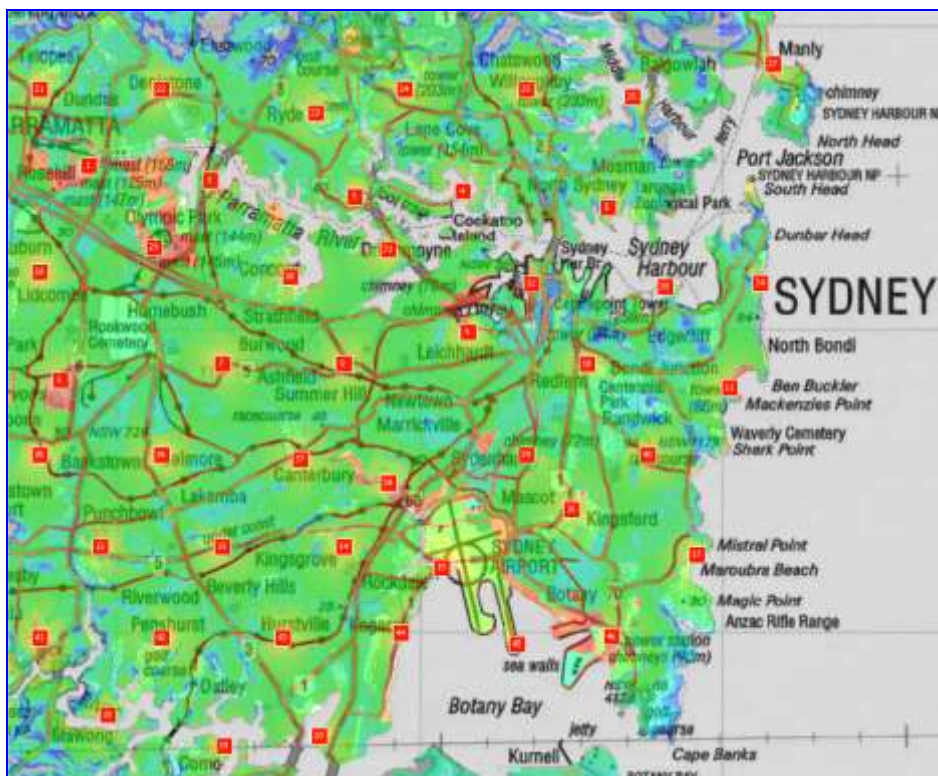
Wanted threshold

Perform missing coverage(s)

Model... options... Cancel START

Typical fade margins for the urban ground occupancies (in that case, the corresponding clutter height is fixed at 0m) and typical heights for the vegetation (ICS telecom then calculate the signal loss by diffraction).

| Clutter parameters |              |                  |                   |
|--------------------|--------------|------------------|-------------------|
| Clutter code       | Name         | Attenuation (dB) | Clutter height(l) |
| 0                  | Open         | 0.0              | 0                 |
| 1                  | Urban        | 26.0             | 0                 |
| 2                  | Dense urban  | 36.0             | 0                 |
| 3                  | Airport      | 20.0             | 0                 |
| 4                  |              | 0.0              | 0                 |
| 5                  | Low Foliage  | 0.0              | 8                 |
| 6                  | Hydro        | 0.0              | 0                 |
| 7                  | High urban   | 45.0             | 0                 |
| 8                  | High foliage | 0.0              | 15                |
| 9                  | Main road    | 0.0              | 0                 |
| 10                 | Rail track   | 0.0              | 0                 |

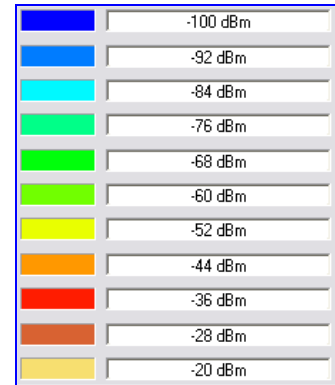
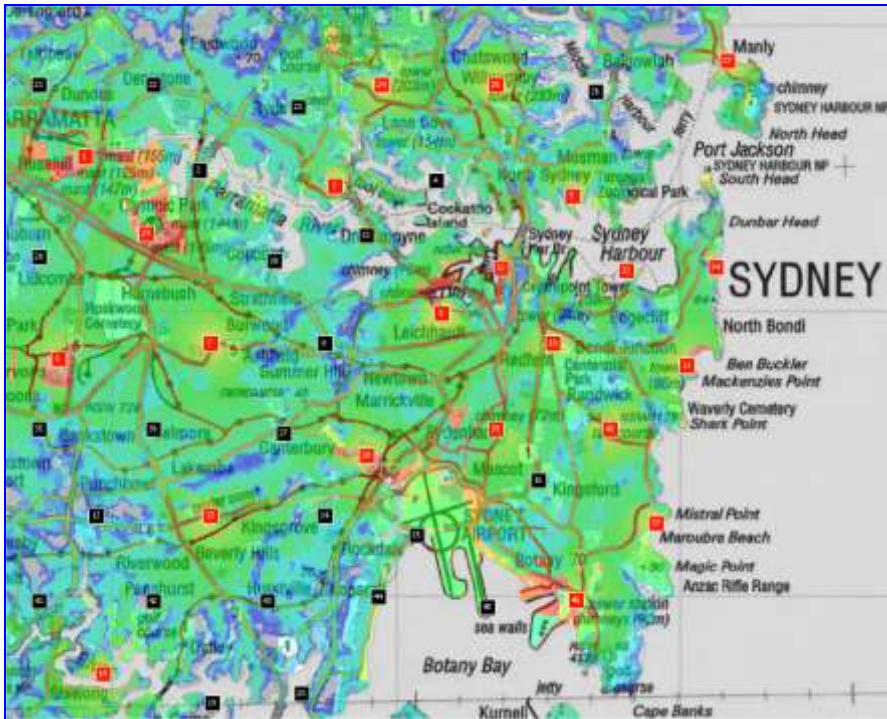


WiMAX coverage plot of the macrocells



### 4.3 Filtering the best BS locations

ICS telecom can then select among this site list the BS covering the largest area and the most interesting ground occupancies.



**Selected sites**

**Removed sites**

WiMAX coverage plot of the most relevant macrocells

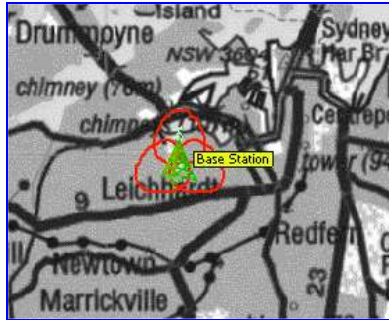


### 4.4 Sectorizing the Base Stations and analyze the coverage

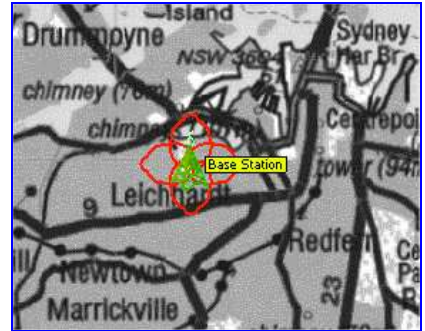
Once the best site locations have been found, the BS can be sectorized (for fixed/nomadic WiMax).



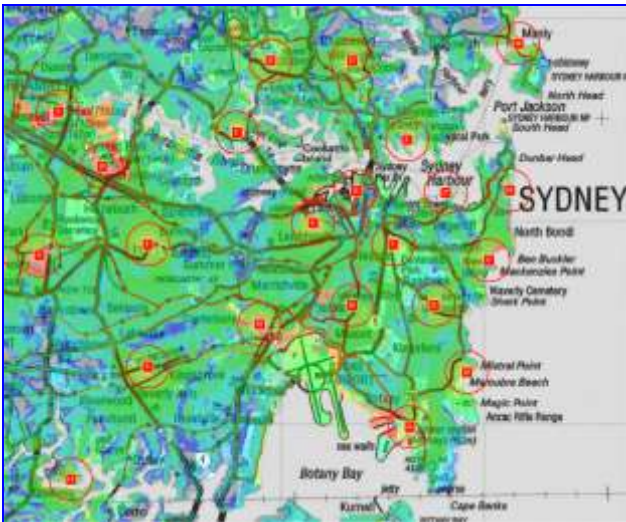
Omni-directional



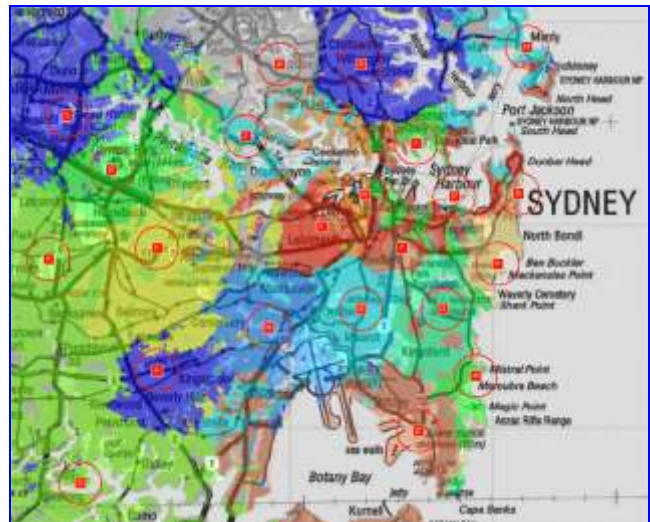
3 Sectors



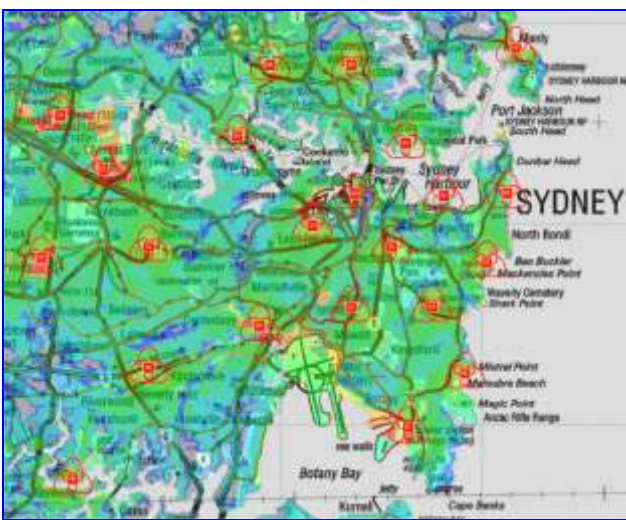
4 Sectors



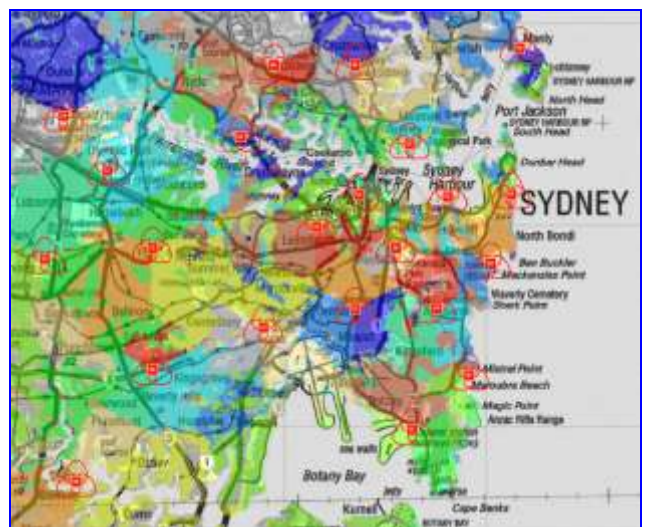
Coverage map (Omni-directional)



Best Server map (Omni-directional)



Coverage map (Tri-sectorial)



Best Server map (Tri-sectorial)



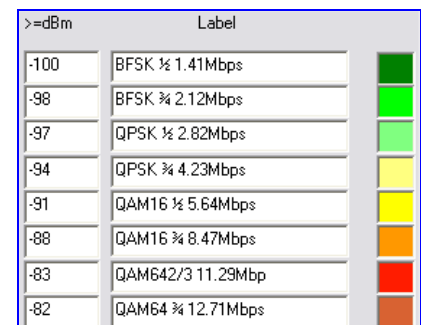
## 5 WiMAX Capacity analysis

### 5.1 Bit rate / modulation map

A first stage is to display a map of the **achievable bit rates according to the power received**. Typical values are given here below :

**Typical sensitivities in fixed mode:**

| Modulation | Code rate | Sensitivity dBm | Raw Bit Rate DL fixed (Mbps)<br>3.5 MHz BW | Net throughput DL fixed (Mbps)<br>3.5 MHz BW |
|------------|-----------|-----------------|--|--|
| BFSK       | 1/2       | -100            | 1.41                                       | 1.128  |
|            | 3/4       | -98             | 2.12                                       | 1.696  |
| QPSK       | 1/2       | -97             | 2.82                                       | 2.256  |
|            | 3/4       | -94             | 4.23                                       | 3.384  |
| 16QAM      | 1/2       | -91             | 5.64                                       | 4.512  |
|            | 3/4       | -88             | 8.87                                       | 7.096  |
| 64QAM      | 2/3       | -83             | 11.29                                      | 9.032  |
|            | 3/4       | -82             | 12.71                                      | 10.168                                       |

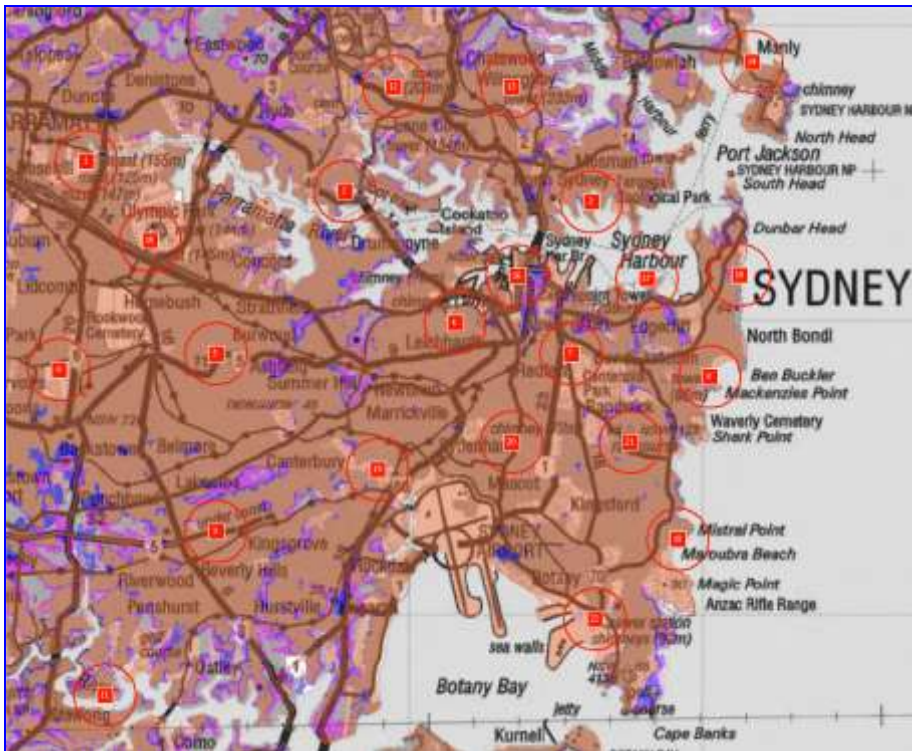


Traffic map (raw bit rates) of a fixed/nomadic WiMAX network in ICS telecom



**Typical sensitivities in mobile mode:**

| Modulation | Code rate | Sensitivity dBm | Bit rate DL Mobile (Mbps)<br>5 MHz BW |
|------------|-----------|-----------------|---------------------------------------|
| QPSK       | 1/8       | -101            | Below the noise floor                 |
| QPSK       | 1/2       | -94             | 2.88                                  |
| 16QAM      | 1/2       | -88             | 5.68                                  |



| >=dBm | Label              |
|-------|--------------------|
| -101  | QPSK 1/8 Noise     |
| -94   | QPSK 1/2 2.88 Mbps |
| -88   | 16QAM 1/2 5.68Mbps |

Traffic map of a mobile WiMAX network in ICS telecom

**5.2 The WiMAX CPE**

In order to refine the capacity analysis in fixed/nomadic WiMax, each CPE can be placed and defined **individually**.

**Subscriber parameters**

Call sign: [CPE] Site color: [Yellow]

**Basic parameters**

Nominal power (W): 0.1000000

Dynamic (dB): 50

Tx ant gain (dB): 17.00

Rx ant gain (dB): 17.00

Losses (dB): [1.00] [1.00]

Tx add losses (dB): 0.00

Frequency (MHz): 3700.00000

Antenna height (m): 1.50

Azimuth (0-359): 272.48

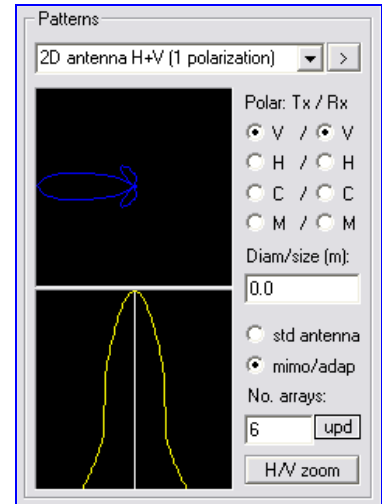
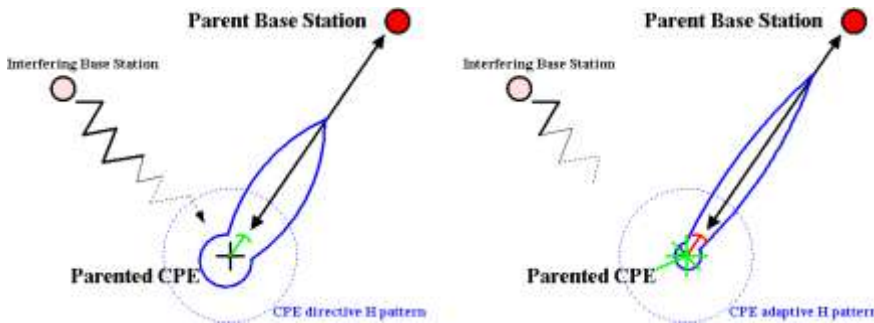
Tilt (-89+89): -0.069





### 5.2.1 Radiation pattern

Each WIMAX CPE is configured using its corresponding radiation pattern. It can be a standard antenna, or being adaptive (better connectivity, with more resistance with regards to the interference).

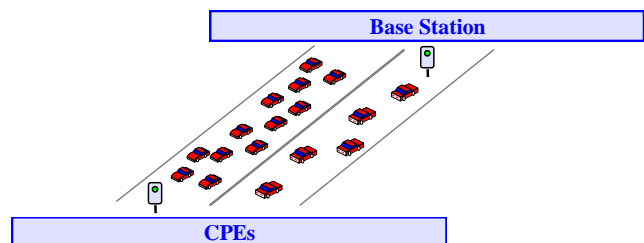
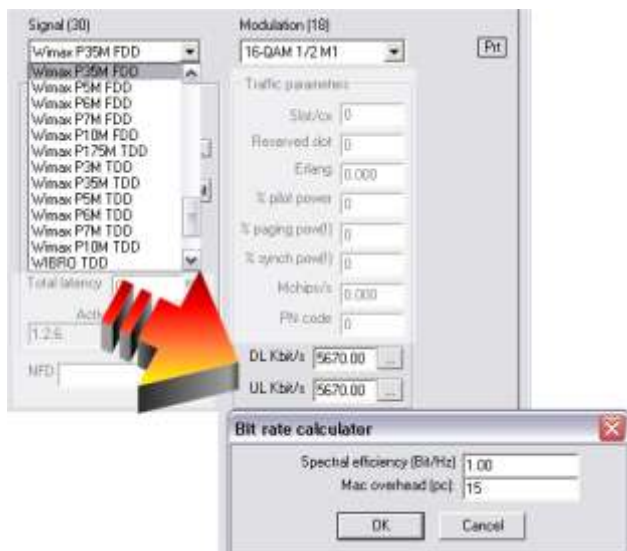


### 5.2.2 The 802.16 parenting according to the Service Flows

#### 5.2.2.1 Throughput at the BS level

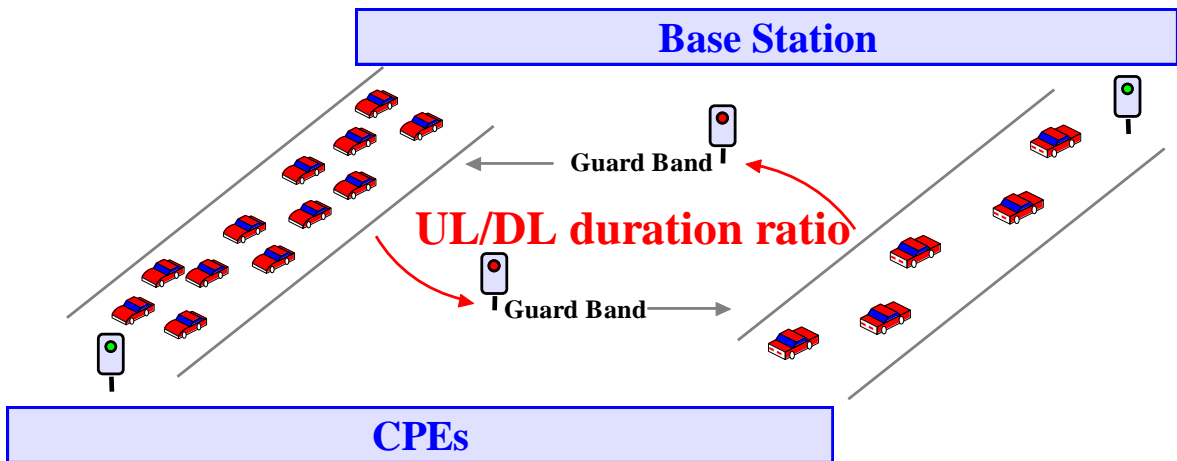
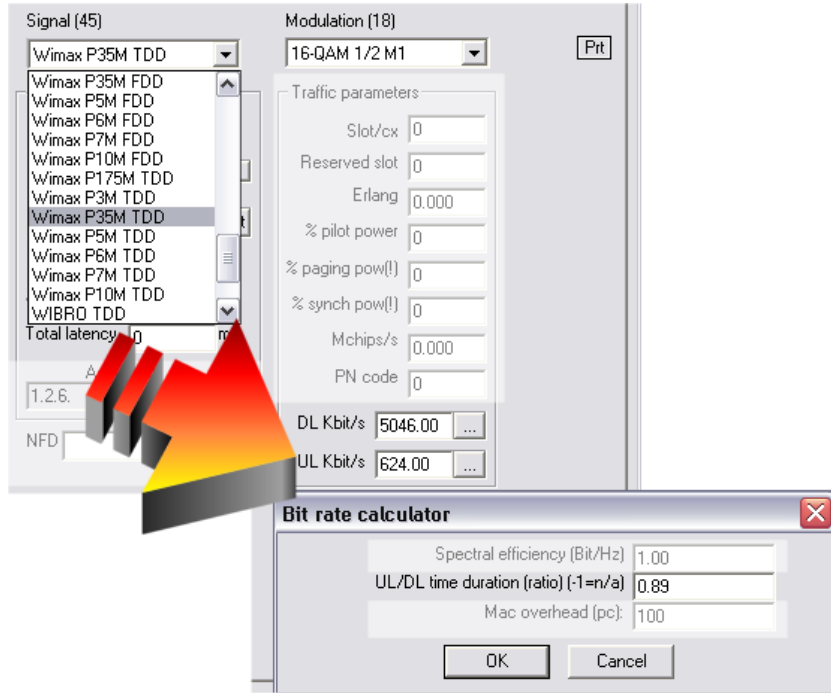
The user can make the choice between TDD or FDD type of equipment. The way the BS throughput is managed is different.

For **FDD systems**, the user can specify one throughput value for the downlink, and one for the uplink.





For **TDD systems**, the throughput is shared between the downlink and the uplink. This sharing is defined as an **UL/DL duration ratio**.



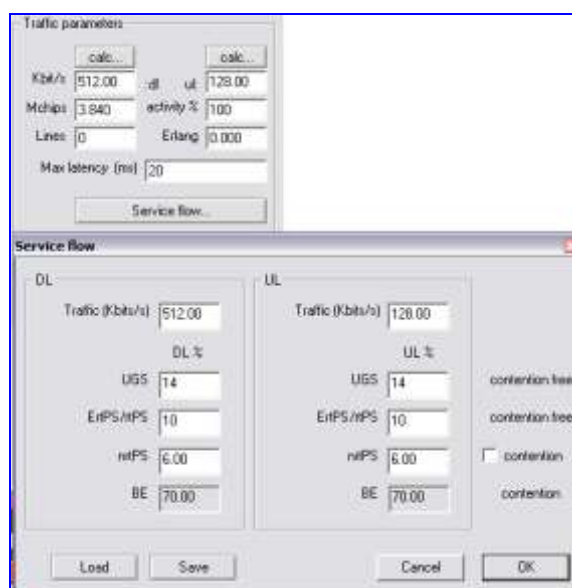


### 5.2.2.2 Service Flow at the CPE level

Each CPE has its own traffic request, in downlink and in uplink. But the way the traffic request is managed by the BS depends on the type of connection that is used. These types are called **Service Flows** by the NWG of the WiMax Forum©.

| QoS category                                      | Applications                         | QoS specifications   |
|---|--------------------------------------|--|
| <b>UGS</b><br>Unsolicited Grand Service           | VoIP                                 | Maximum Sustained Rate<br>Maximum latency Tolerance<br>Jitter tolerance  |
| <b>rtPS</b><br>Real-Time Packet Service           | Streaming Audio or Video             | Minimum reserved rate<br>Maximum sustained rate<br>Maximum latency tolerance<br>Traffic priority                     |
| <b>ErtPS</b><br>Extended Real-Time Packet Service | Voice with Activity Detection (VoIP) | Minimum reserved rate<br>Maximum sustained rate<br>Maximum latency tolerance<br>Jitter tolerance<br>Traffic priority |
| <b>nrtPS</b><br>Non Real-Time Packet Service      | File Transfer Protocol (FTP)         | Minimum reserved rate<br>Maximum sustained rate<br>Traffic priority  |
| <b>BE</b><br>Best-Effort Service                  | Data transfer, Web Browsing, etc...  | Maximum sustained rate<br>Traffic priority   |

Depending on the customer profile, the user can specify per CPE what is its Service Flow repartition :

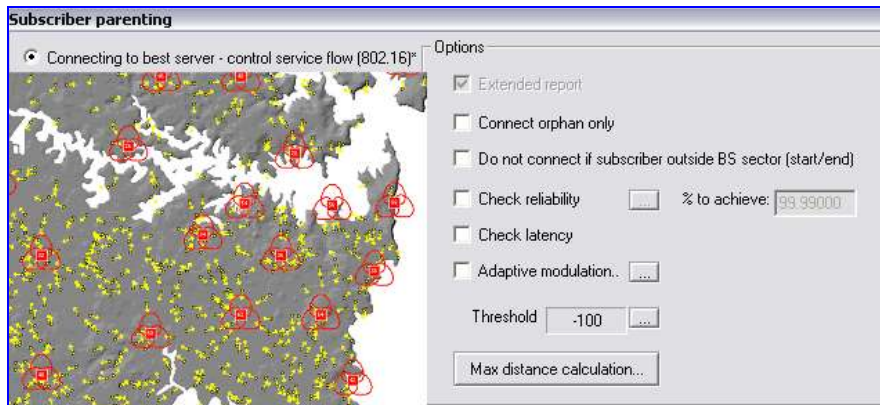


Traffic request and Service Flows at the CPE level in ICS telecom



### 5.2.2.3 The service Flow parenting

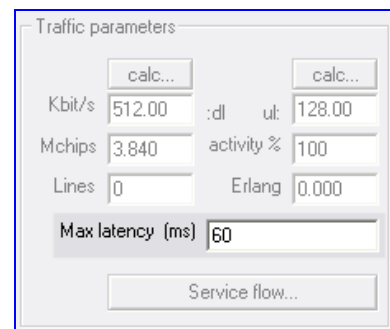
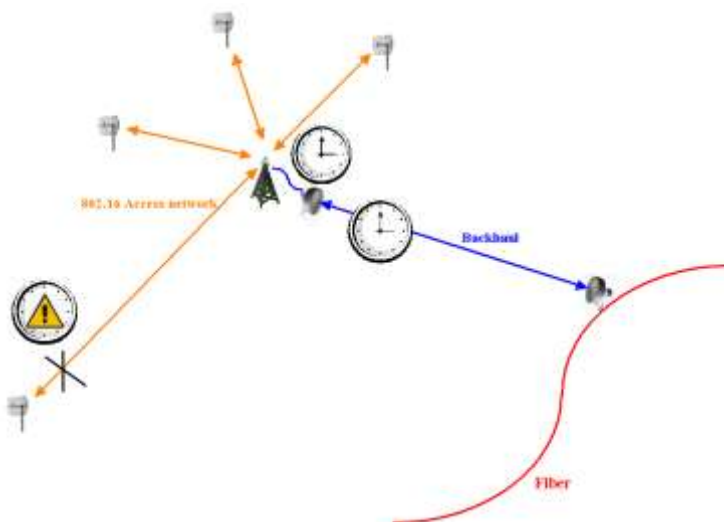
Once the user has defined the available throughput available at the BS level, and the traffic/service flow requests at the CPEs level, a very detailed QoS analysis can be performed.



Parenting 802.16 CPEs in ICS telecom

The 802.16 parenting checks :

- The **priorities** between the service flows
- The fact that the service flows might be **contention free** (UGS, rtPS...) or **contention based** (BE)
- The parenting in **DL**, then in **UL**
- The maximum **tolerable latency** between the end user and the source of the signal



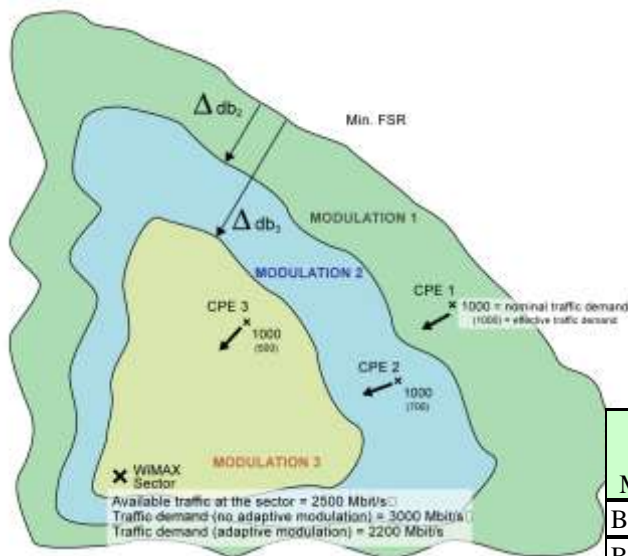
- The **contention ratio** of each CPE





• The **adaptive modulation**

The key parameter for traffic modeling (using adaptive antenna arrays or not) from a planning tool point of view is the bit rate that can be offered for a given received signal level. This characteristic itself depends on the modulation used, hardware algorithms, transmitting and receiving antenna specifications... The user can specify its own traffic parameters according to the power received, it is then straightforward to deal with a large set of scenarios. In addition, ICS telecom also includes features dedicated to adaptive modulation, to offer the maximum bit rate according to the best modulation and the signal level received.



| Delta (dB) / Threshold | Traffic factor (0-1) |
|------------------------|----------------------|
| 0.0                    | 1.00                 |
| 2.0                    | 0.66                 |
| 6.0                    | 0.33                 |
| 9.0                    | 0.25                 |
| 12.0                   | 0.17                 |
| 18.0                   | 0.11                 |

Threshold: -100

Buttons: Close, Save, Load, calc, p, f

delta 255 = infinite

(min delta) / (max delta)

| Modulation | Bit rate  | Sensitivity [dBm] | dBs above the threshold | Bit rate ratio |
|------------|-----------|-------------------|-------------------------|----------------|
| BFSK 1/2   | 1.41Mbps  | -100              | 0                       | 1              |
| BFSK 3/4   | 2.12Mbps  | -98               | 2                       | 0.66           |
| QPSK 1/2   | 2.82Mbps  | -97               | 3                       | 0.5            |
| QPSK 3/4   | 4.23Mbps  | -94               | 6                       | 0.33           |
| QAM16 1/2  | 5.64Mbps  | -91               | 9                       | 0.25           |
| QAM16 3/4  | 8.47Mbps  | -88               | 12                      | 0.17           |
| QAM64 2/3  | 11.29Mbps | -83               | 17                      | 0.12           |
| QAM64 3/4  | 12.71Mbps | -82               | 18                      | 0.11           |

• The **reliability** of each CPE-BS link

**Path reliability**

Vigants method

CCIR R338 model

NA model

Coastal areas

Subtropical areas

Average terrain

Mountainous area

ITU-R 530 method

ITU-R P.530 (all % of time)

Average annual reliability

Average worst month reliability

Signature: undefined

Point refract. gradient dN1: -250.00

Upd from Rx location: upd map

Earth radius (km)

Land: 8500 Sea: 8500

Margin: 10-3: 50.1 dB, 10-6: 45.1 dB (no rain) - PR: -37.87 dBm (rain), -37.87 dBm (no rain) - TD: 0 dB - S(uV): 2862.05

Path reliability multi-path: (10-6) 99.99999 % (0.0526 min/yr) - (10-3) 99.99999 % (0.0526 min/yr)

Path reliability rain: (10-6) 99.99999 % (0.0703 min/yr) - (10-3) 99.99999 % (0.0703 min/yr)

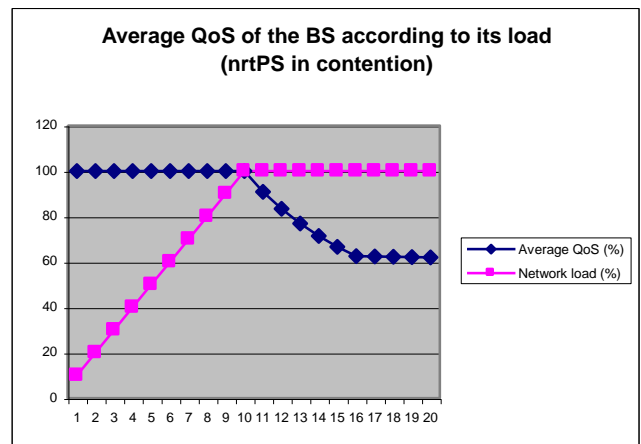
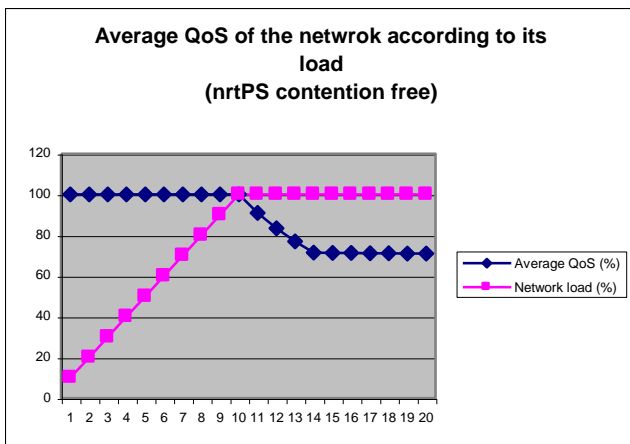
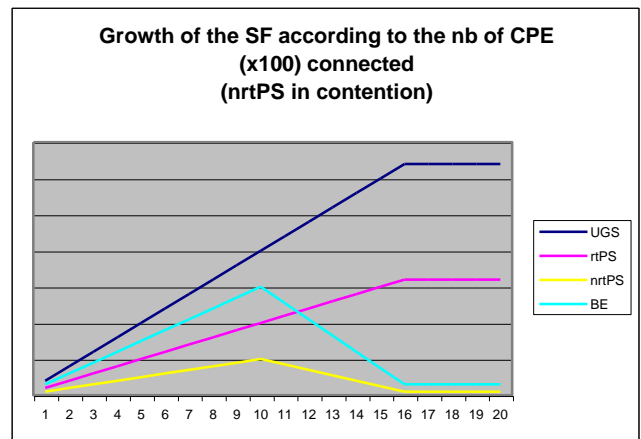
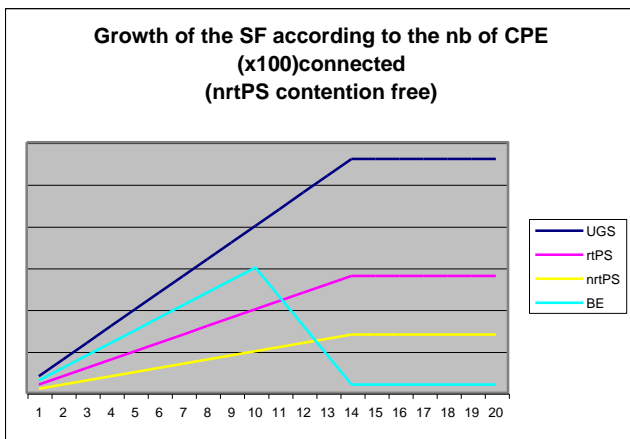
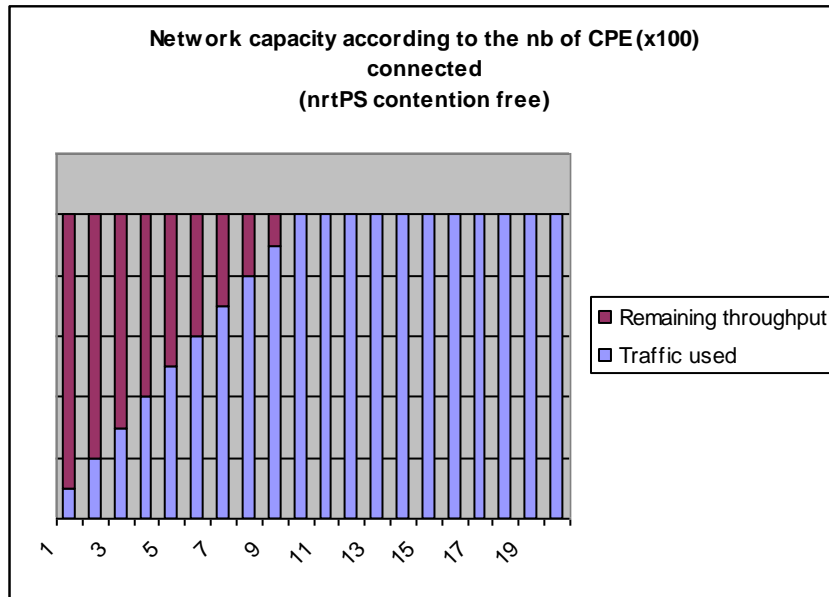
Path reliability: (10-6) 99.99998 % - (10-3) 99.99998 % (-41.9 dB needed to expect 99.99000%, EIRP = -21.90 dBW 10-6)

Frequency: 2.20 GHz - Power: 34.0 dBm - Free space loss: 94.7 dB - Diffraction: 0.0 dB - EndToEnd: -63.7 dB

Earth (Km): 8500 (land) 8500 (sea) - Rain (ITU): 0.00 dB (30.00 mm/h) - Gaz/Fog: 0.0000 dB (7.50 g/m3)



The user can then check the load of the network with regards to the **capacity** :



Load of the network with business or game oriented CPEs

Load of the network with web browsing or P2P CPEs

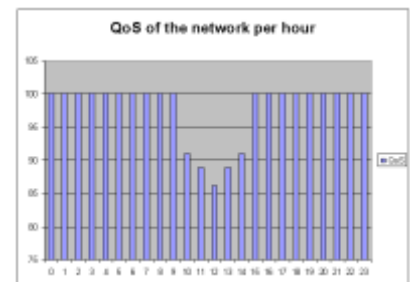
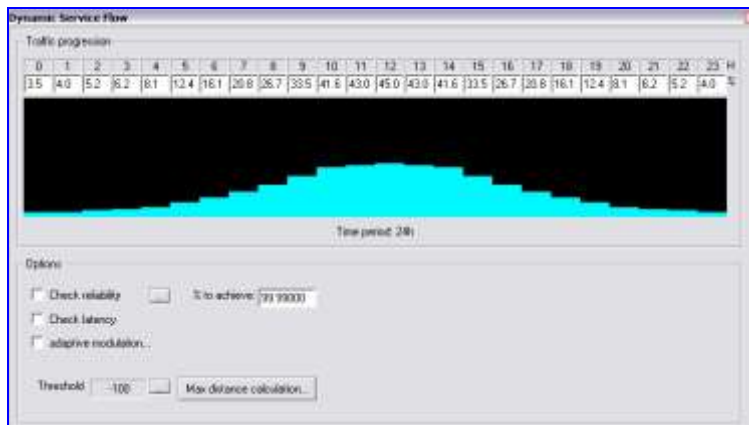
Identification of the saturation in capacity of the WiMAX network, according to different usage profiles



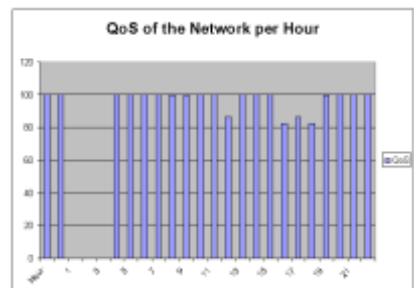
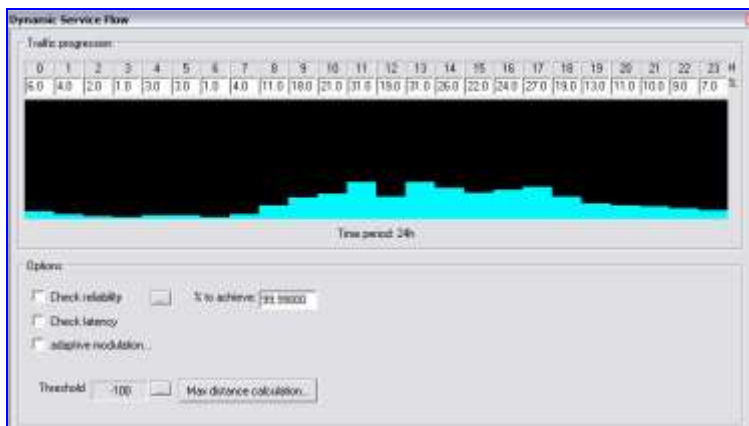
### 5.2.3 QoS curve according to the contention ratio

The QoS of the network also varies according to the time of the journey. Each customer does not use its connection in the same time of the day. **The contention ratio of the WiMAX connection can be setup individually, or on a 24 hours basis.**

Business profile



Consumer profile



QoS of the WiMAX network according to the time of the journey and the variation of the contention ratio



## 6 WiMAX Spectrum analysis

### 6.1 FWA-type analysis

#### 6.1.1 Coverage mode

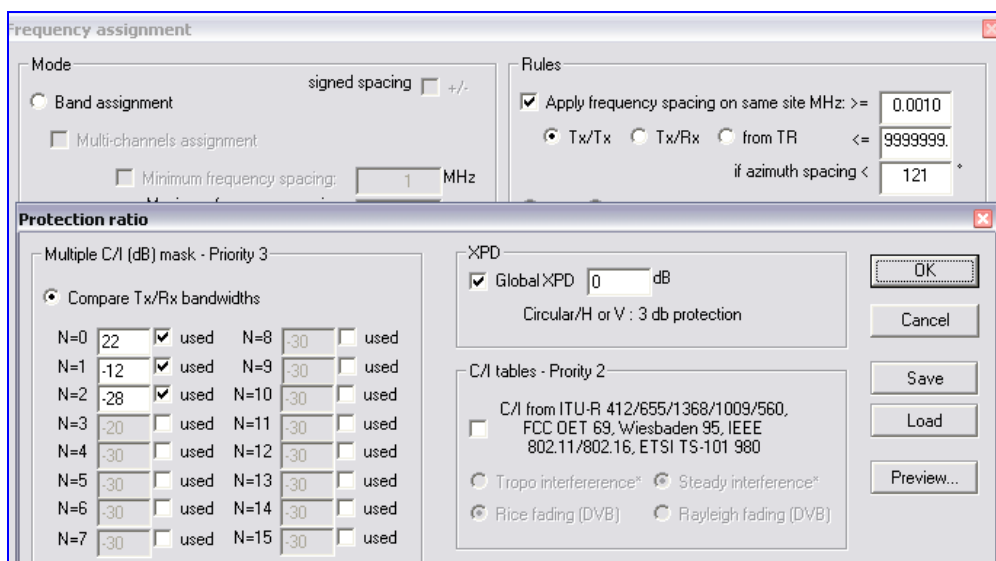
Fixed Wireless Access type of networks must be configured in order to lower as much as possible the interference cases between the sectors of the network. In order to so, the **protection ratios** according to co-channel or adjacent channel unwanted signals must be known. The interference generated might decrease the C/N ratio.

##### 6.1.1.1 Frequency allocation

Based upon the allocated spectrum, the user can ask ICS telecom to automatically find the best frequency plan that would be used by the BS.

When the connection is made with the highest modulation, the receiver is the most sensible; it therefore advised to use the worst case scenario when the frequencies are assigned by ICS telecom.

| Modulation | Code rate | Cochannel Interference Sensitivity<br>BW 3.5 MHz | Adjacent channel Interference<br>Sensitivity<br>BW 3.5 MHz | N+2 channel<br>interference sensitivity<br>3.5 MHz BW |
|------------|-----------|--|--|---|
| BFSK       | 1/2       | 4  | -30  | -46   |
|            | 3/4       | 6  | -28  | -44   |
| QPSK       | 1/2       | 7  | -27  | -43   |
|            | 3/4       | 10   | -24  | -40   |
| 16QAM      | 1/2       | 12   | -22  | -38   |
|            | 3/4       | 16   | -18  | -34   |
| 64QAM      | 2/3       | 21   | -13  | -29   |
|            | 3/4       | 22   | -12  | -28   |



Frequency assignment engine in ICS telecom



### 6.1.1.2 Interference calculation and resulting traffic map

The calculation can be launched on a best RSSI basis, highlighting for each covered location the best non-interfered sector, or the pink color, meaning that all potential servers interfere one with each other.

**Interference (C/I)**

Many to many

Global interference

Co-site excluded

Multi-channels

Activated wanted station

Interference + best server

Multi-channels

Activated wanted station

Frequency selection

Fmin: 10.00000

Fmax: 100000.00000

Rx antenna discrimination

none

419/GE

user

Rx gain (dB): 16.00

---

**Protection ratio**

Multiple C/I (dB) mask - Priority 3

Compare Tx/Rx bandwidths

|     |     |                                     |      |      |     |                          |      |
|-----|-----|-------------------------------------|------|------|-----|--------------------------|------|
| N=0 | 22  | <input checked="" type="checkbox"/> | used | N=8  | -30 | <input type="checkbox"/> | used |
| N=1 | -12 | <input checked="" type="checkbox"/> | used | N=9  | -30 | <input type="checkbox"/> | used |
| N=2 | -28 | <input checked="" type="checkbox"/> | used | N=10 | -30 | <input type="checkbox"/> | used |
| N=3 | -20 | <input type="checkbox"/>            | used | N=11 | -30 | <input type="checkbox"/> | used |
| N=4 | -30 | <input type="checkbox"/>            | used | N=12 | -30 | <input type="checkbox"/> | used |
| N=5 | -30 | <input type="checkbox"/>            | used | N=13 | -30 | <input type="checkbox"/> | used |
| N=6 | -30 | <input type="checkbox"/>            | used | N=14 | -30 | <input type="checkbox"/> | used |
| N=7 | -30 | <input type="checkbox"/>            | used | N=15 | -30 | <input type="checkbox"/> | used |

XPD

Global XPD: 0 dB

Circular/H or V: 3 db protection

C/I tables - Priority 2

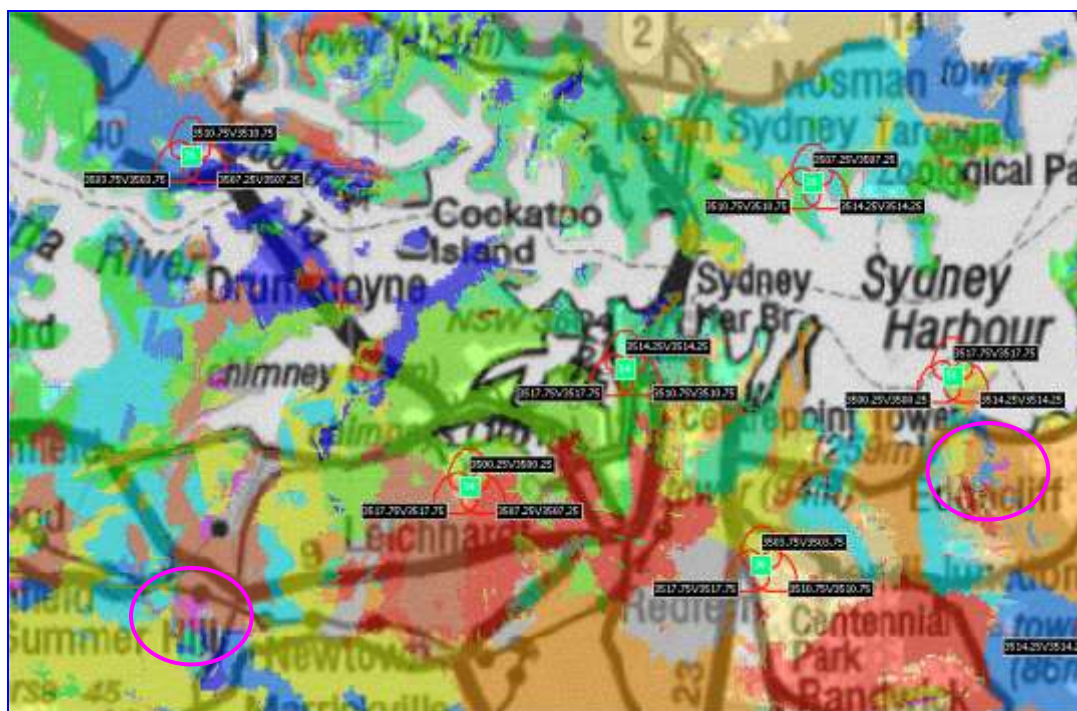
C/I from ITU-R 412/655/1368/1009/560, FCC OET 69, Wiesbaden 95, IEEE 802.11/802.16, ETSI TS-101 980

Tropo interference\*

Steady interference\*

Rice fading (DVB)

Rayleigh fading (DVB)



Best server map, including interference cases in ICS telecom



ICS telecom can also display a SNR map, based upon the rejection filter. Here below an example of a SNR map in C/sum(I) + N mode, using a Noise Floor of -104 dBm, a 1<sup>st</sup> channel attenuation of 34 dB, and a second channel attenuation of 50 dB, and an directive Rx pattern with 16 dBi gain.

**Average interference (dBm)**

Action

- Activated station coverage modification (TD)\*\*
- Threshold degradation map\*\*
- C/sum(I)+N calculation
- C/sum(I) calculation

Normal distrib % stdev (dB):

Unwanted =  activated  
 de-activated and activated  
 de-activated

Display best server when C/N+I:  dB  
 and best server effect:  dB

Noise floor:  dBm    Rx gain:  dB  
 Wanted threshold:  dB

Threshold = wanted coverage [exit rad]

IRF mask (dB)

|     |  |      |                               |
|-----|--|------|-------------------------------|
| N=0 | <input checked="" type="checkbox"/> used | N=10 | <input type="checkbox"/> used |
| N=1 | <input checked="" type="checkbox"/> used | N=11 | <input type="checkbox"/> used |
| N=2 | <input checked="" type="checkbox"/> used | N=12 | <input type="checkbox"/> used |
| N=3 | <input type="checkbox"/> used            | N=13 | <input type="checkbox"/> used |
| N=4 | <input type="checkbox"/> used            | N=14 | <input type="checkbox"/> used |
| N=5 | <input type="checkbox"/> used            | N=15 | <input type="checkbox"/> used |
| N=6 | <input type="checkbox"/> used            |      |                               |
| N=7 | <input type="checkbox"/> used            |      |                               |
| N=8 | <input type="checkbox"/> used            |      |                               |
| N=9 | <input type="checkbox"/> used            |      |                               |

Check "used" button to define filter for 14 GHz table

IRF from tables (ETSI 38.14, 13.23, 24.5-26.5 GHz and IC 16 KHz BW, 150, 450, 850 MHz), IEEE 802.11/802.16

CNC-DNRc51     CNC-DNRc54

IRF from NFD matrix

Global XPD:  dB    Circular/M or V = 3 db

Rx antenna parameters

Antenna gain (dB):     RPE: use RPE 3D files:

Antenna height (m):     select antenna:

H-soften:

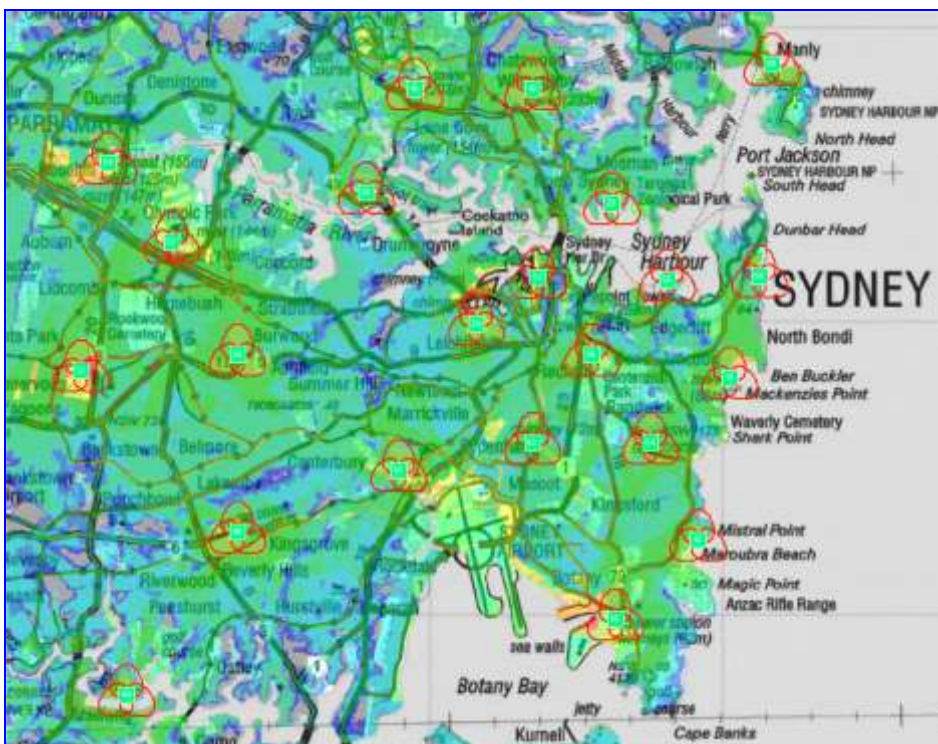
Use ITU-R419:

Start, Cancel, Palette, Station list, Load, Save, OK, Cancel

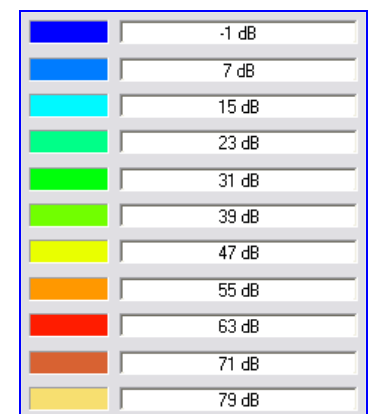
\* C-D/N req \*\* use general frequency only

Rx ant discr:  none,  413/GE,  user

Tips: do not used XPD in interference functions if you use RPE for coverage modifications. Use XPD if R419.

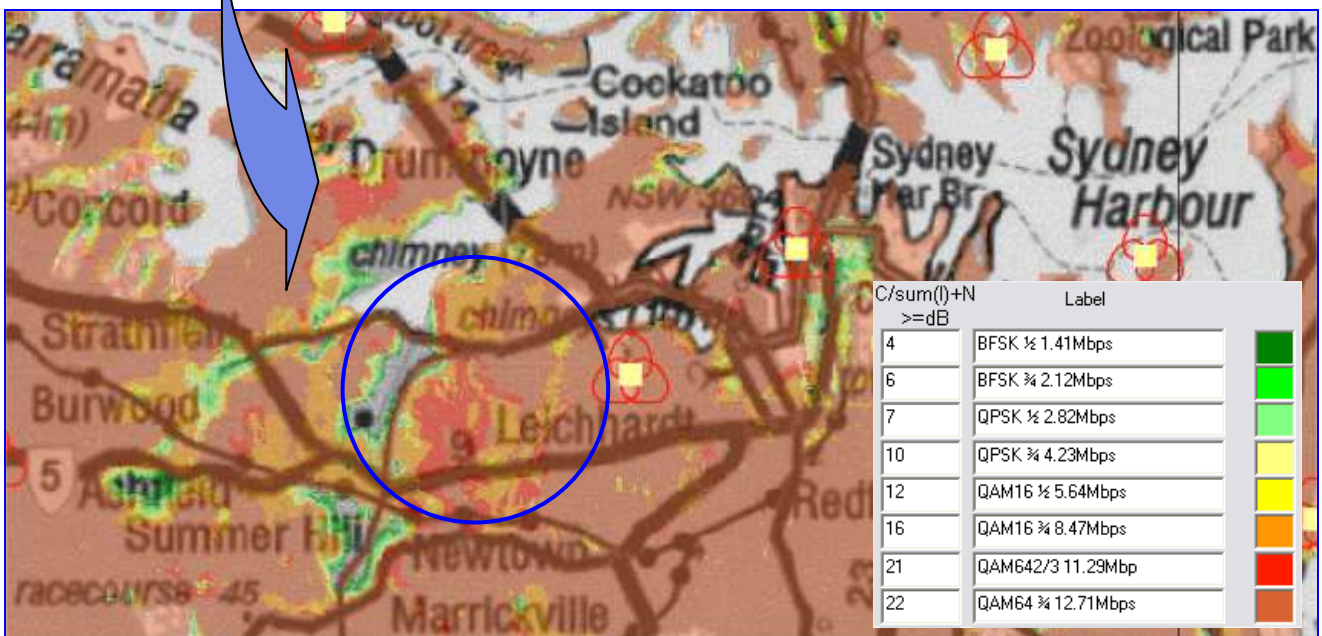
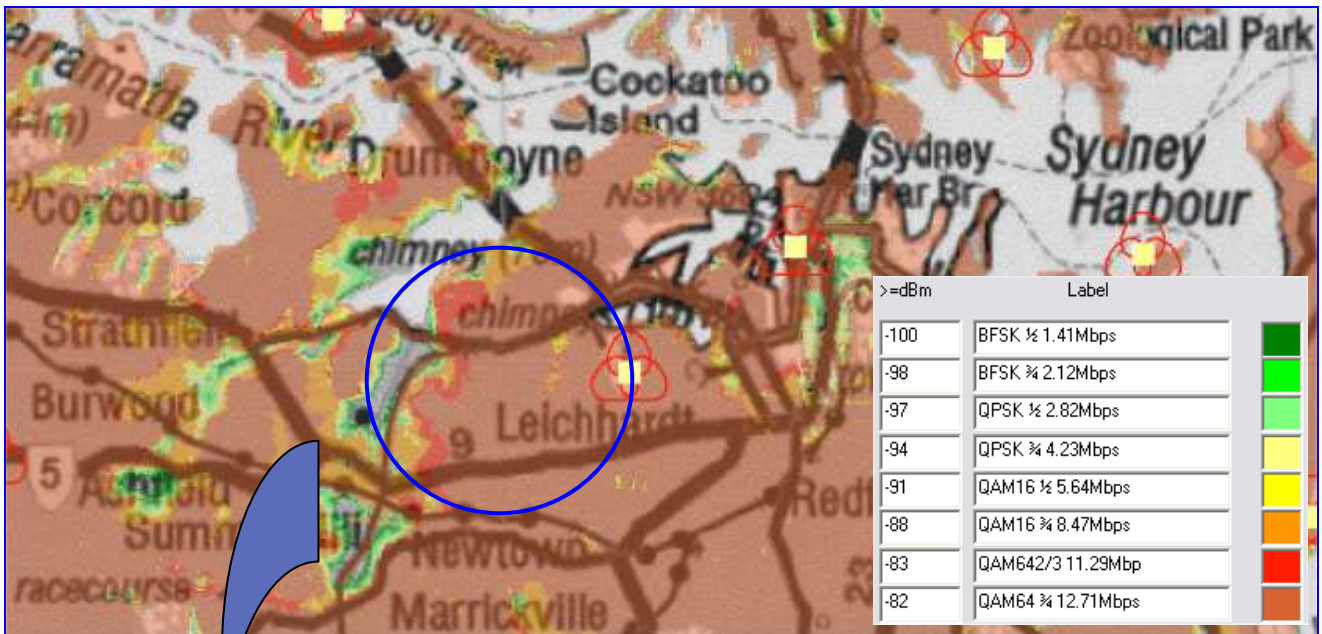


Signal to Noise ratio map (in C/sum(I)+n mode) of a WiMAX network in ICS telecom





This map can be used in order to update the original traffic map with a new traffic map, taking not only the power received into account, but also the C/N ratio.



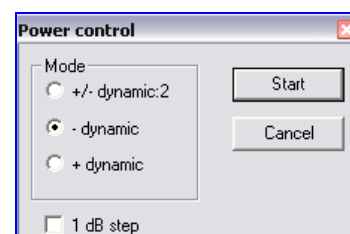
Traffic map according to the SNR in ICS telecom



## 6.1.2 PMP interference

### 6.1.2.1 Power control

To improve the overall performance of the system. The transmitted power of the CPEs is regulated so that the power received at the base station is at a predetermined level. ICS telecom adjusts the uplink radiated power at the CPE side, thereby limiting cases of interference.

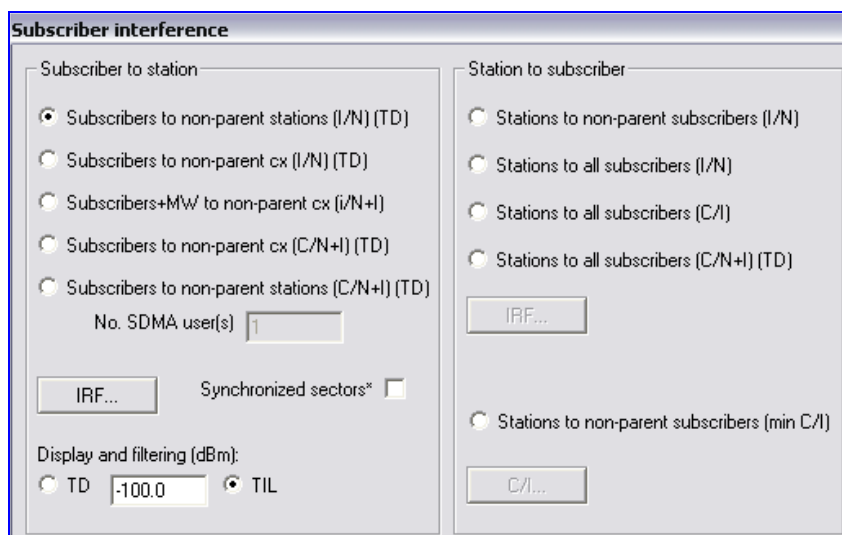


### 6.1.2.2 UL/DL interference

ICS telecom features an interference calculation engine specially dedicated to the Point to Point connections that allow an easy analysis for uplink and downlink interference cases.

This could be useful for non-synchronized TDD systems, or FDD systems, where the CPEs can raise the noise floor of the BS they are non-parented to (or the other way).

SDMA systems uplink interference can be managed by specifying the maximum number of terminals that can be simultaneously connected to a given BS.



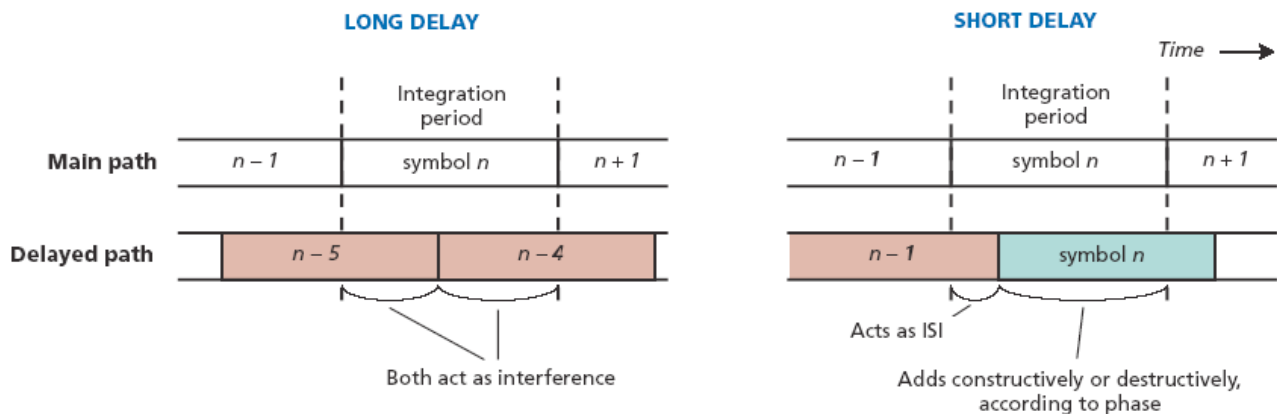


## 7 Mobility analysis

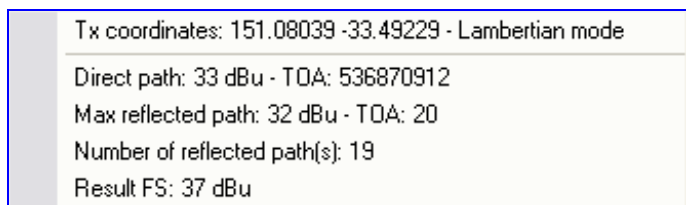
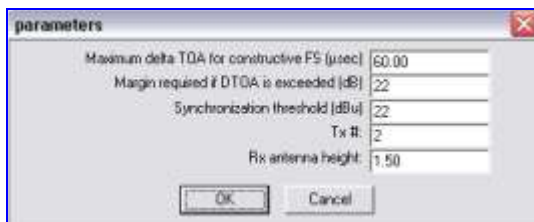
ICS telecom features various functions in order to manage the upcoming WiMax mobility.

### 7.1 Delay spread

**Orthogonal Frequency Division Multiplexing (OFDM)** is a multiplexing technique that subdivides the bandwidth into multiple frequency sub-carriers. In an OFDM system, the input data stream is divided into several parallel sub-streams of reduced data rate (thus increased symbol duration) and each sub-stream is modulated and transmitted on a separate orthogonal sub-carrier. The increased symbol duration improves the robustness of OFDM to **delay spread**. Furthermore, the introduction of the cyclic prefix (CP) can completely eliminate Inter-Symbol Interference (ISI) as long as the CP duration is longer than the channel delay spread (source : WiMAX Forum©).



ICS telecom's OFDM parameters box for simulating multipath reflection can also highlight the cases where the signal is damaged due to the reflected signal being greater (by a user-defined margin in dB) than the direct path threshold and with a ToA outside of the OFDM receiver Guard interval:



Constructive and Destructive OFDM signals in ICS telecom



## 7.2 Hand-over maps

ICS telecom manages the display of handover maps.

### 7.2.1 Fast Base Station Switching

When the Fast Base Station Switching (**FBSS**) is supported, the MS and BS maintain a list of BSs that are involved in FBSS with the MS. This set is called an Active Set. In FBSS, the MS continuously monitors the base stations in the Active Set. Among the BSs in the Active Set, an Anchor BS is defined. When operating in FBSS, the MS only communicates with the Anchor BS for uplink and downlink messages including management and traffic connections. Transition from one Anchor BS to another (i.e. BS switching) is performed without invocation of explicit HO signaling messages.

#### 7.2.1.1 List of neighbors

If it is not already known by the mobile operator, the user can locate BS per BS with what other BS it could be a neighbor.

| Record | Ident | Erlang   | From # | Start address | To # | Destination address | Distance m | Handover dB | Handover % | Handover km2 | Link       |
|--------|-------|----------|--------|---------------|------|---------------------|------------|-------------|------------|--------------|------------|
| 1      | none  | 12.2733  | 6      | address       | 1    | address             | 13689.11   | 5           | 7.59       | 12.27        | not linked |
| 2      | none  | 37.9449  | 6      | address       | 2    | address             | 5834.67    | 5           | 15.88      | 25.67        | not linked |
| 3      | none  | 55.6740  | 6      | address       | 3    | address             | 6183.57    | 5           | 10.96      | 17.73        | not linked |
| 4      | none  | 71.1657  | 6      | address       | 4    | address             | 13563.52   | 5           | 9.58       | 15.49        | not linked |
| 5      | none  | 106.9812 | 6      | address       | 5    | address             | 8197.52    | 5           | 22.15      | 35.82        | not linked |
| 7      | none  | 155.6478 | 6      | address       | 7    | address             | 4067.85    | 5           | 30.10      | 48.67        | not linked |
| 8      | none  | 166.7808 | 6      | address       | 8    | address             | 8831.68    | 5           | 6.88       | 11.13        | not linked |
| 9      | none  | 173.2563 | 6      | address       | 9    | address             | 10780.69   | 5           | 4.00       | 6.48         | not linked |
| 10     | none  | 176.0670 | 6      | address       | 10   | address             | 10544.01   | 5           | 1.74       | 2.81         | not linked |
| 11     | none  | 177.0246 | 6      | address       | 11   | address             | 17359.87   | 5           | 0.59       | 0.96         | not linked |
| 12     | none  | 203.5638 | 6      | address       | 12   | address             | 8280.71    | 5           | 16.41      | 26.54        | not linked |
| 13     | none  | 217.7172 | 6      | address       | 13   | address             | 8236.90    | 5           | 8.75       | 14.15        | not linked |
| 14     | none  | 225.0666 | 6      | address       | 14   | address             | 13413.76   | 5           | 4.54       | 7.35         | not linked |
| 15     | none  | 253.5246 | 6      | address       | 15   | address             | 10748.42   | 5           | 17.60      | 28.46        | not linked |
| 16     | none  | 270.0792 | 6      | address       | 16   | address             | 2634.03    | 5           | 10.24      | 16.55        | not linked |

Click for handover option - \*only linked stations - Code 255= Handover area

Hard handover 
  Soft handover 
 Active Set #:  Available active set(s):

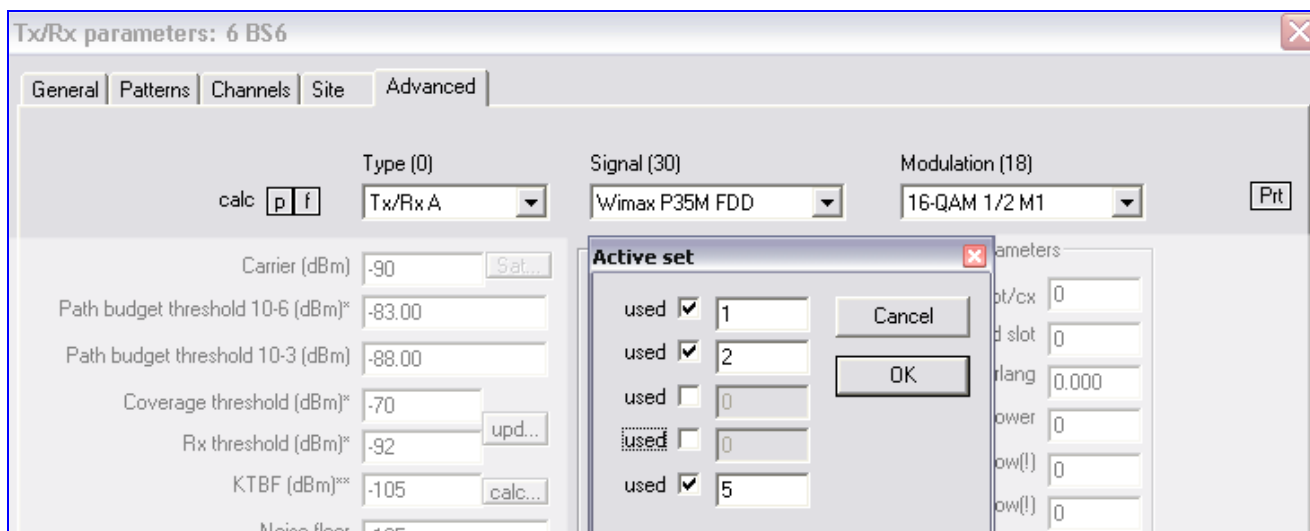
Default handover margin (dB):

Highlighting the neighbours of the Base Station in order to define the Active Sets



### 7.2.1.2 Active set allocation

The radio-planner can specify for each BS the active set(s) it is belonging to :



Definition of the active sets each BS belongs to in ICS telecom

### 7.2.1.3 FSBB handover map within the same active set

The user can specify the active set to be analyzed. By specifying the soft handover mode, ICS telecom will highlight the areas where an FSBB handover can occur. These areas are highlighted in pink in the picture below, otherwise ICS telecom will give the best server site color.

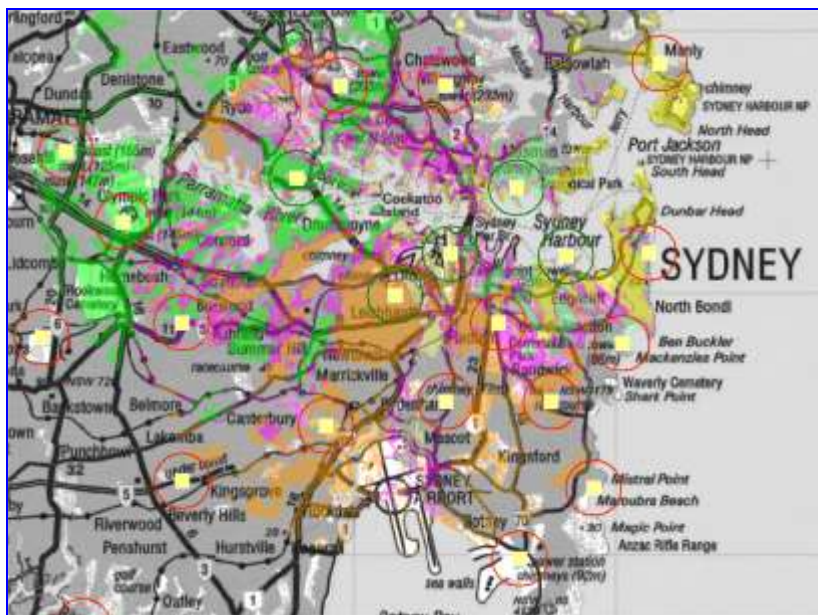


FSBB handover map between stations defined in the same active set nb 1 (in green)



### 7.2.2 Hard handover

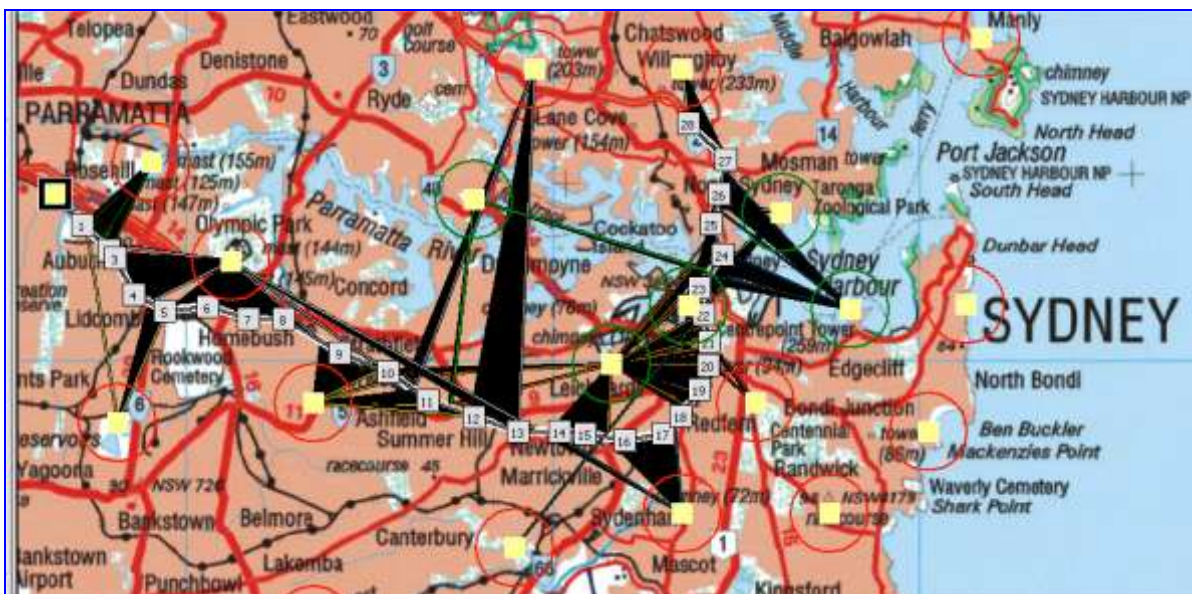
When the Mobile WiMAX unit will switch from one active set area to another, it performs what is called a hard handover (**HHO**). ICS telecom can display where the mobile anchored to a specific active set will have to hard hand off to another one.



HHO map of a mobile anchored to Active set 1 to any other active set

### 7.3 Hand-over along a mobile path

If the radio planner is more particularly interested into a mobile path, a dedicated hand over analysis can be performed, in UL or in DL.

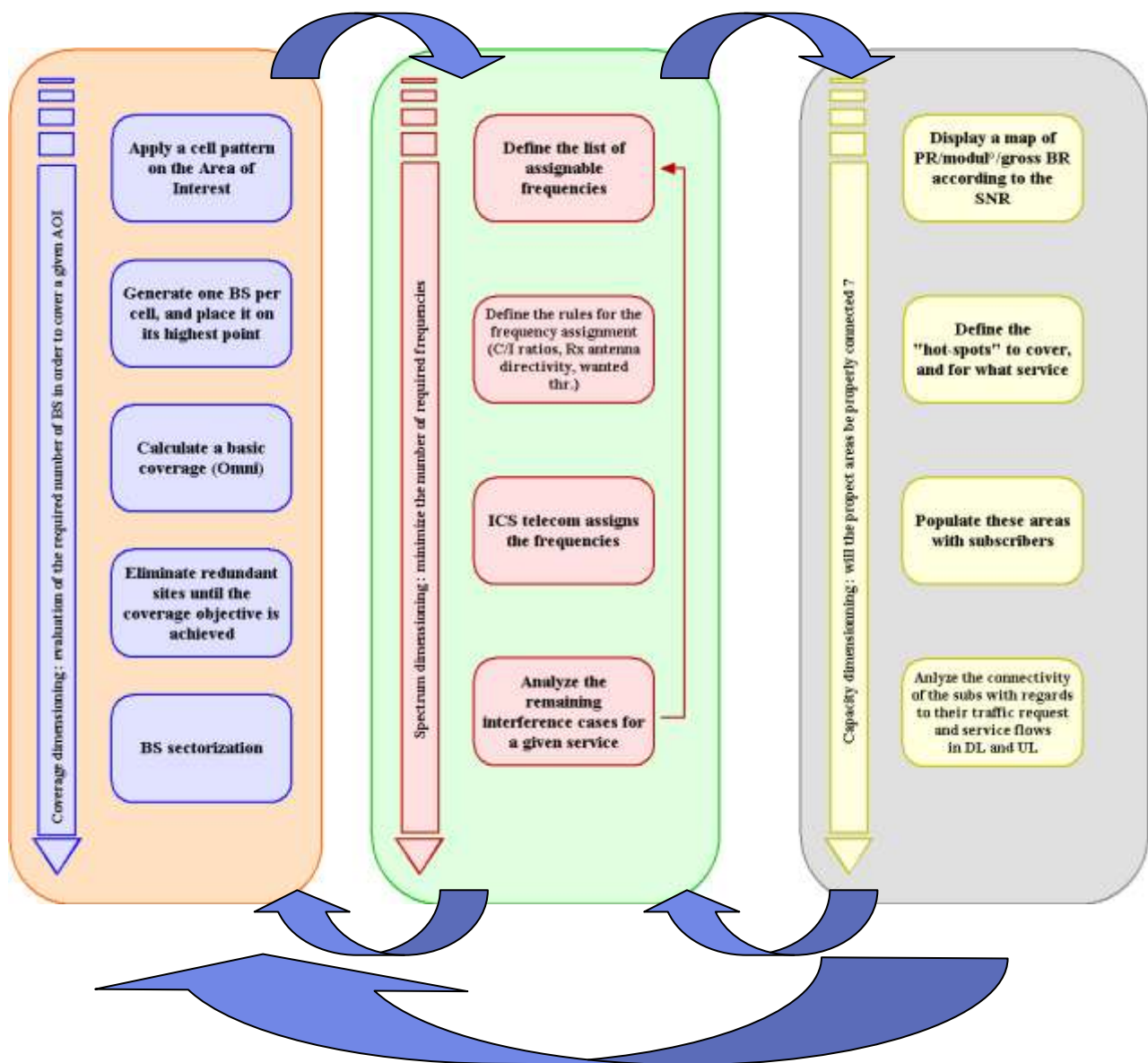


Hand over analysis of a mobile WiMAX unit in ICS telecom



## 8 WiMAX radio-planning : a workflow with ICS telecom

WiMAX radio-planning is an iterative process. A first start would be to select the **best locations** for the Base stations (Phase 1), in order to minimize the **spectrum required** (Phase 2). If the interference areas are too large, or if the SNR map highlights a high decrease of bandwidth, the network itself might have to be optimized from Phase 1 again. What's more, guaranteeing coverage without interference does not close the planning process : the capacity of the designed network needs indeed to be checked, in order to foresee a **potential saturation of the network** (Phase 3). If so, the network might have to be densified, generating therefore additional potential interference (Phase 2). Radio-planning is mean of iteration between these 3 phases, in order to achieve a good balance between them.



**ATDI SA**  
8, rue de l'Arcade  
75008 Paris - France  
Tel. +33 (0) 53 30 89 40  
Fax +33 (0)1 53 30 89 49  
e-mail : [atdi@atdi.com](mailto:atdi@atdi.com)  
<http://www.atdi.com>

**ATDI Inc.**  
2, Pidgeon Hill Drive, Suite 560  
Sterling - VA 20165 - USA  
Tel. +1 703 848 4750  
Fax +1 703 848 4752  
e-mail : [americas@atdi.com](mailto:americas@atdi.com)  
<http://www.atdi-us.com>

**ATDI Ibérica**  
c/Manuel González Longoria,8  
28010 Madrid - Spain  
Tel. +34 91 44 67 252  
Fax +34 91 44 50 383  
e-mail : [southern-europe@atdi.com](mailto:southern-europe@atdi.com)  
<http://www.atdi.es>

**ATDI Ltd.**  
Kingsland Court - Three Bridges Road  
Crawley - West Sussex - RH10 1HL - UK  
Tel. +44 (0)1293 522052  
Fax +44 (0)1293 522521  
e-mail : [northern-europe@atdi.com](mailto:northern-europe@atdi.com)  
<http://www.atdi.co.uk>

**ATDI SAL**  
812 Tabaris, Avenue Charles Malek  
Achrafieh, Beirut - Lebanon  
Tel. +961 1 330 331  
Fax +961 1 216 206  
e-mail : [mea@atdi.com](mailto:mea@atdi.com)  
<http://www.atdi.com>

**ATDI EST**  
Bd. Aviatorilor, 59  
Bucharest  
Romania  
Tel +40 21 222 42 10  
Fax +40 21 222 42 13  
e-mail : [eastern-europe@atdi.com](mailto:eastern-europe@atdi.com)  
<http://www.atdi.ro>

**ATDI OOO**  
Sadovnicheskaya st. 72 bld 1  
115035 Moscow - Russian Federation  
Tel. +7 095 252 96 10  
Fax +7 501 408 50 74  
e-mail : [moscow@atdi.com](mailto:moscow@atdi.com)  
<http://www.atdi.ru>

**ATDI South Pacific PTY Ltd**  
79 Macarthur Street - Ultimo  
NSW 2007 - Australia  
Tel. +61 (0)2 9213 2200  
Fax +61 (0)2 9213 2299  
e-mail : [south-pacific@atdi.com](mailto:south-pacific@atdi.com)  
<http://www.atdi.com>

**ATDI UA partnership with LIS**  
erbitskogo str. 1  
02068 Kiev  
Ukraine  
Tel +380 44 564 33 68  
e-mail : [v.vigovsky@atdi.com](mailto:v.vigovsky@atdi.com)  
<http://www.lissoft.com.ua>